

Service
Service
Service



Service Manual

TABLE OF CONTENTS

	Page
Technical Specifications	1-2
Safety Instruction, Warning & Notes.....	1-3
QSG & DFU Instruction	2
Mechanical and Dismantling Instructions	3
Software Version & Upgrades, Region Code Change.....	4
Trouble Shooting Chart	5
Set Wiring Diagram	6
Electrical Diagrams and PCB layouts.....	7
Set Mechanical Exploded view & Parts List	8
Revision List	9

© Copyright 2009 Philips Consumer Electronics B.V. Eindhoven, The Netherlands
All rights reserved. No part of this publication may be reproduced, stored in a retrieval system or transmitted, in any form or by any means, electronic, mechanical, photocopying, or otherwise without the prior permission of Philips.



Specifications

Note

- Specification and design are subject to change without notice

Video

- Signal system: PAL / NTSC
- Composite video output: 1 Vp-p (75 ohm)
- HDMI output 480p, 576p, 720p, 1080i, 1080p, 1080p24

Audio

- 2 Channel analog output
 - Audio Front L&R : 2 Vrms (> 1 kohm)
- Digital output: 0.5 Vp-p (75 ohm)
 - Coaxial
- HDMI output
- Sampling frequency:
 - MP3: 32 kHz, 44.1 kHz, 48 kHz
 - WMA: 44.1 kHz, 48 kHz
- Constant bit rate:
 - MP3: 112 kbps - 320 kbps
 - WMA: 48 kbps - 192 kbps

USB

- As additional memory for software updates and BonusView contents. Not for media play.

Main unit

- Power supply rating
 - Europe: 220~240V ~AC, ~50 Hz; /98 110~240V ~AC, ~50~60Hz; /51 220~230V ~AC, ~50Hz
- Power consumption: 25W
- Power consumption in standby mode: < 1 W
- Dimensions (w x h x d): 360 x 54 x 240 (mm)
- Net Weight: 2.5 kg

Accessories supplied

- Remote control and batteries
- Audio/Video cables
- User manual

Laser Specification

- Laser Type:
 - BD Laser Diode: InGaN/AlGaIn
 - DVD Laser Diode: InGaAlP
 - CD Laser Diode: AlGaAs
- Wave length:
 - BD: 405 +5nm/-5nm
 - DVD: 650 +13nm/-10nm
 - CD: 790 +15nm/-15nm
- Output power:
 - BD: Max. ratings: 20mW
 - DVD: Max. ratings: 7mW
 - CD: Max. ratings: 7mW

Safety instruction, Warning & Notes

Safety instruction

1. General safety

Safety regulations require that during a repair:

- . Connect the unit to the mains via an isolation transformer.
- . Replace safety components indicated by the symbol ▲, only by components identical to the original ones. Any other component substitution (other than original type) may increase risk of fire or electrical shock hazard.

Safety regulations require that after a repair, you must return the unit in its original condition. Pay, in particular, attention to the following points:

- . Route the wires/cables correctly, and fix them with the mounted cable clamps.
- . Check the insulation of the mains lead for external damage.
- . Check the electrical DC resistance between the mains plug and the secondary side:
 - 1) Unplug the mains cord, and connect a wire between the two pins of the mains plug.
 - 2) Set the mains switch the "on" position (keep the mains cord unplug).
 - 3) Measure the resistance value between the mains plug and the front panel, controls, and chassis bottom.
 - 4) Repair or correct unit when the resistance measurement is less than 1M Ω .
 - 5) Verify this, before you return the unit to the customer/user (ref. UL-standard no. 1492).
 - 6) Switch the unit "off", and remove the wire between the two pins of the mains plug.

2.Laser safety

This unit employs a laser. Only qualified service personnel may remove the cover, or attempt to service this device (due to possible eye injury).

Laser device unit

Type	: Semiconductor laser GaAlAs
Wavelength	: 650nm (DVD) : 780nm (VCD/CD)
Output power	: 7mW (DVD) : 10mW (DVD /CD)

Beam divergence: 60 degree

Note: Use of controls or adjustments or performance of procedure other than those specified herein, may result in hazardous radiation exposure. Avoid direct exposure to beam.

Warning

1. General

. All ICs and many other semiconductors are susceptible to electrostatic discharges (ESD). Careless handling during repair can reduce life drastically. Make sure that, during repair, you are at the same potential as the mass of the set by a wristband with resistance. Keep components and tools at this same potential. Available ESD protection equipment:

- 1) Complete kit ESD3 (small tablemat, wristband, connection box, extension cable and earth cable) 4822 310 10671.
- 2) Wristband tester 4822 344 13999.

. Be careful during measurements in the live voltage section. The primary side of the power supply, including the heat sink, carries live mains voltage when you connect the player to the mains (even when the player is "off!"). It is possible to touch copper tracks and/or components in this unshielded primary area, when you service the player. Service personnel must take precautions to prevent touching this area or components in this area. A "lighting stroke" and a stripe-marked printing on the printed wiring board, indicate the primary side of the power supply.

. Never replace modules, or components, while the unit is "on".

2. Laser

- . The use of optical instruments with this product, will increase eye hazard.
- . Only qualified service personnel may remove the cover or attempt to service this device, due to possible eye injury.
- . Repair handling should take place as much as possible with a disc loaded inside the player.
- . Text below is placed inside the unit, on the laser cover shield:


CAUTION: VISIBLE AND INVISIBLE LASER RADIATION WHEN OPEN, AVOID EXPOSURE TO BEAM.

Notes: Manufactured under licence from Dolby Laboratories. The double-D symbol is trademarks of Dolby Laboratories, Inc. All rights reserved.

Notes

Lead-Free requirement for service

INDENTIFICATION:

Regardless of special logo (not always indicated) 

One must treat all sets from 1.1.2005 onwards, according next rules.

***Important note:** In fact also products a little older can also be treated in this way as long as you avoid mixing solder-alloys (leaded/ lead-free). So best to always use SAC305 and the higher temperatures belong to this.*

Due to lead-free technology some rules have to be respected by the workshop during a repair:

- Use only lead-free solder alloy Philips SAC305 with order code 0622 149 00106. If lead-free solder-paste is required, please contact the manufacturer of your solder-equipment. In general use of solder-paste within workshops should be avoided because paste is not easy to store and to handle.
- Use only adequate solder tools applicable for lead-free solder alloy. The solder tool must be able
 - To reach at least a solder-temperature of 400°C,
 - To stabilize the adjusted temperature at the solder-tip
 - To exchange solder-tips for different applications.
- Adjust your solder tool so that a temperature around 360°C – 380°C is reached and stabilized at the solder joint. Heating-time of the solder-joint should not exceed ~ 4 sec. Avoid temperatures above 400°C otherwise wear-out of tips will rise drastically and flux-fluid will be destroyed. To avoid wear-out of tips switch off un-used equipment, or reduce heat.
- Mix of lead-free solder alloy / parts with leaded solder alloy / parts is possible but PHILIPS recommends strongly to avoid mixed solder alloy types (leaded and lead-free). If one cannot avoid, clean carefully the solder-joint from old solder alloy and re-solder with new solder alloy (SAC305).

- Use only original spare-parts listed in the Service-Manuals. Not listed standard-material (commodities) has to be purchased at external companies.
- Special information for BGA-ICs:
 - always use the 12nc-recognizable soldering temperature profile of the specific BGA (for de-soldering always use highest lead-free temperature profile, in case of doubt)
 - lead free BGA-ICs will be delivered in so-called 'dry-packaging' (sealed pack including a silica gel pack) to protect the IC against moisture. After opening, dependent of MSL-level seen on indicator-label in the bag, the BGA-IC possibly still has to be baked dry. This will be communicated via AYS-website.
- Do not re-use BGAs at all.
- For sets produced before 1.1.2005, containing leaded soldering-tin and components, all needed spare-parts will be available till the end of the service-period. For repair of such sets nothing changes.
- On our website:

www.atyourservice.ce.Philips.com

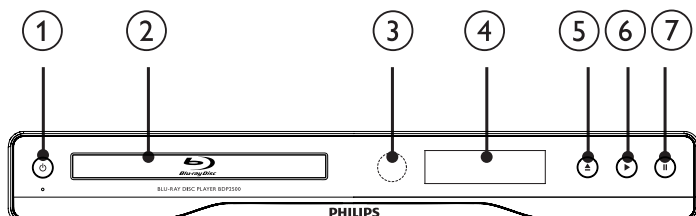
You find more information to:





BGA-de-/soldering (+ baking instructions)
 Heating-profiles of BGAs and other ICs used in Philips-sets

You will find this and more technical information within the "magazine", chapter "workshop news".
 For additional questions please contact your local repair-helpdesk.

Product overview

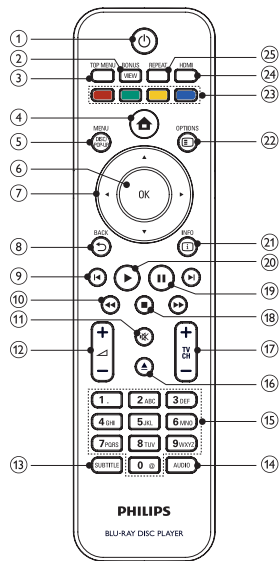
Main unit



- ① 
 - Turn on this product or switch to standby mode.
- ② **Disc compartment**
- ③ **IR sensor**
 - Point the remote control at the IR sensor.
- ④ **Display panel**
- ⑤ 
 - Open or close the disc compartment.
- ⑥ 
 - Start or resume play.
- ⑦ 
 - Pause play.

Front panel display	Description
LOADING	Loading a disc.
UNSUPP	The disc is not supported.
BD	Blu-ray disc is recognized.
HDMI ERR	The HDMI video resolution is not supported by TV.
FASTFWD	Fast forward mode.
FASTBWD	Fast reverse mode.
SLOWFWD	Slow forward mode.
SETTINGS	Setup menu is displayed.
HOME	Home menu is displayed.
CHAPTER	Current chapter is in chapter repeat mode.
DOLBY D	Dolby Digital audio is being played.
DOLBY HD	Dolby HD audio is being played.
UPGRADE	Software upgrade is in progress.

Remote control



- ① Turn on this product or switch to standby mode.
- Turn on this product or switch to standby mode.
 - When EasyLink is enabled, press and hold for at least three seconds to turn all connected HDMI CEC compliant devices to standby.
- ② **BONUSVIEW**
- Turn on or off the secondary video in a small screen window during play (applicable only to BD-video that supports the BONUSVIEW or Picture-In-Picture feature).
- ③ **TOP MENU**
- **BD**: Display the top menu.
 - **DVD**: Display the title menu.
- ④ Access the home menu.
- ⑤ **DISC MENU / POP-UP MENU**
- **BD**: Access or exit the pop-up menu.
 - **DVD**: Access or exit the disc menu.
- ⑥ **OK**
- Confirm an entry or selection.
- ⑦ Navigate through the menus.
- ⑧ **BACK**
- Return to a previous display menu.
- ⑨ Skip to the previous or next title, chapter, or track.
- ⑩ Search backward or forward.
- ⑪ Mute volume (applicable only to certain Philips brand TVs).
- ⑫ **+/-**
- Adjust volume (applicable only to certain Philips brand TVs).
- ⑬ **SUBTITLE**
- Select a subtitle language on a disc.
- ⑭ **AUDIO**
- Select an audio language or channel on a disc.
- ⑮ **Alphanumeric buttons**
- Select an item to play.
 - Enter values.
- ⑯ Open or close the disc compartment.
- ⑰ **TV CH +/-**
- Select a TV channel (applicable only to certain Philips brand TVs).
- ⑱ Stop play.
- ⑲ Pause play.
- Move the paused picture one step forward.
- ⑳ Start or resume play.
- ㉑ **INFO**
- Display the current status or the disc information.
- ㉒ **OPTIONS**
- Access options for the current activity or selection.
- ㉓ **Color buttons**
- **BD**: Select tasks or options.
- ㉔ **HDMI**
- Select the video resolution of HDMI output.
- ㉕ **REPEAT**
- Select repeat play or random play.

Mechanical and Dismantling Instructions

Dismantling Instruction

Detailed information please refer to the model set.

The following guidelines show how to dismantle the player.

Step1: Remove 5 screws around the Top Cover, and then remove the Top Cover (Figure 1).

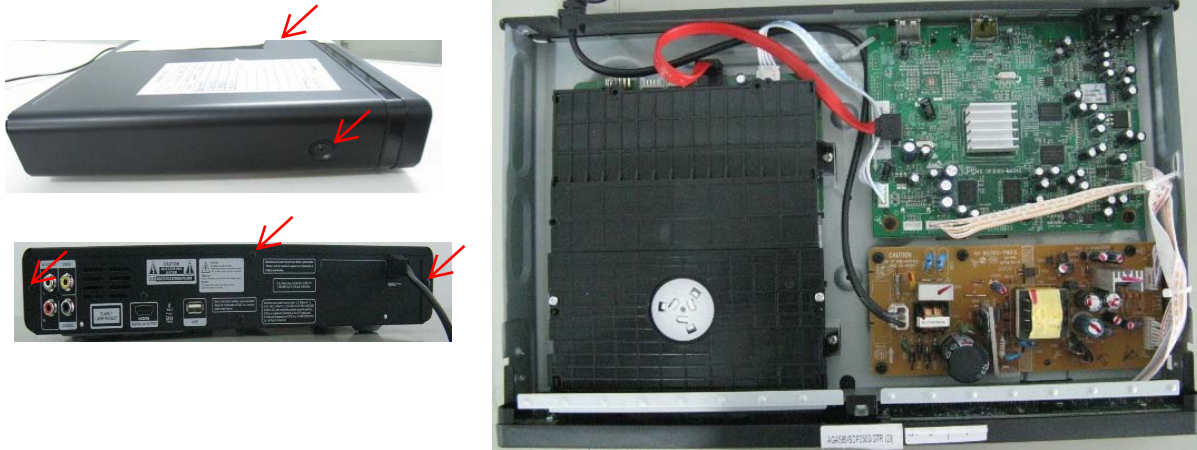


Figure 1

Step2: If it is necessary to dismantle Loader or Front Panel, the Front door should be removed first. (Figure 2)

Note: Make sure to operate gently otherwise the guider would be damaged.



Please kindly note that dismantle the front door assembly carefully to avoid damage tray and the front door.

Figure 2

Mechanical and Dismantling Instructions

Dismantling Instruction

Detailed information please refer to the model set.

Step3: If the tray can't open in normal way, you can make it through the instruction as below (Figure 3).

Note: Make sure to operate gently otherwise the guider would be damaged.



Figure 3

Step4: Dismantling Front Panel, disconnect the connectors (J306, CN502), need release 3 snaps of Front Panel and 2 snaps of bottom cabinet, and cut off 2 twist tie then gently pull the Panel out from the set. (Figure 4 - Figure 6)

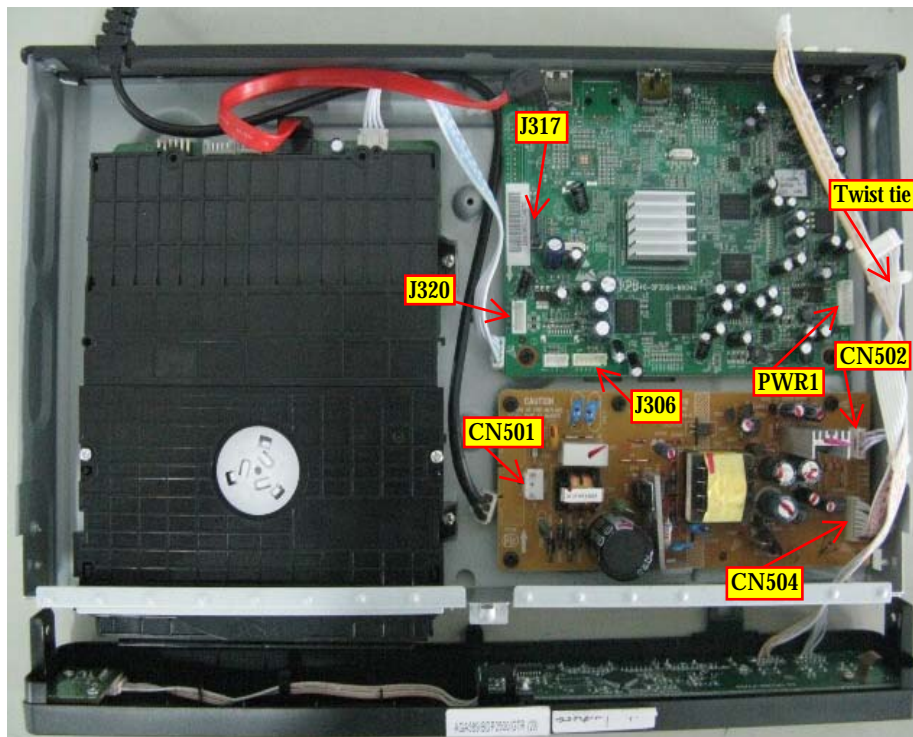


Figure 4

Mechanical and Dismantling Instructions

Dismantling Instruction

Detailed information please refer to the model set.

Step5: Dismantling Loader, disconnect the 2 connector (J317, J320) aiming in the below figure, and remove 4 screws that connects the loader and the bottom cabinet. (Figure 5)

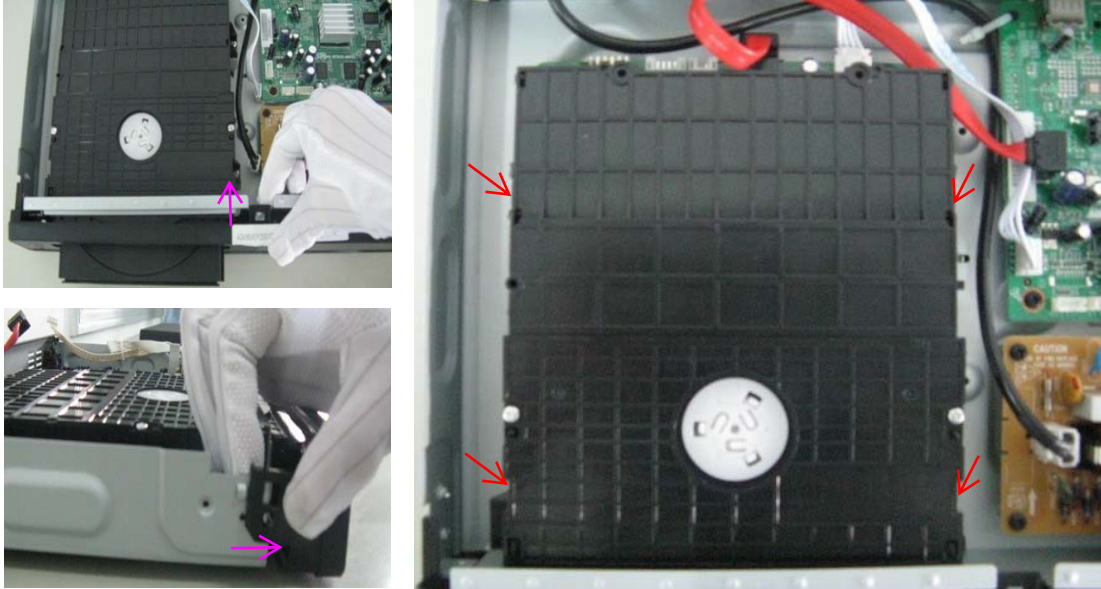


Figure 5

Step6: Dismantling Main Board, first disconnect the connector (PWR1), and then remove 4 screws. (Figure 6)

Step7: Disconnect connector (CN501, CN504) and remove 4 screws on Power Board to dismantle the Power Board. (Figure 6)



Figure 6

Software check and upgrade

Preparation to upgrade software

- 1) Start the CD burning software & create a folder named "UPG",
- 2) Then copy the Bin file (BDP25XXXX-XXX-XXXXXX.bin) into it,
- 3) Burn the data onto the blank CD.

A. Procedure for software upgrade

A) Upgrade software via Disc

- 1) Power on the set and insert the prepared Upgrade CDR.

- 2) The set will start reading disc & response with the following display TV screen:

Now searching for upgrade software!

Please wait...!

Still

- 3) Press <OK> button to confirm, then screen will display :

An upgrade software has been found!

Start upgrade with version:WKXXX.X?

Cancel

Start

- 4) Press Right cursor button to choose "Start", then press <OK>;

- 5) The software will upgrade and screen will display as below:

Upgrade is ongoing, Please wait...

Please do not unplug or switch off the device.

- 6) The screen will display as below when upgrading complete:

Upgrade has completed successfully!

Power off after 1s.

Power Off

- 5) Restart the set.

B) Update software via USB Flash Drive:

- 1) Go to www.philips.com/support to check if the latest software version is available for this player.
 - 2) Download the software onto a USB flash drive.
 - 3) Insert the USB flash drive to the USB jack of the rear panel.
 - 4) In the Home menu, select <Setting>-<Advanced Setup>-<Software Download>-<USB>.
 - 5) Follow the instructions on the TV screen to confirm update operation.
- * Once software update is complete, this player automatically turns to standby.
- 6) Disconnect the power cord for a few seconds and connect again to turn on the player.

B. Read out the software versions to confirm upgrading

- 1) Power on the set and open the tray door.
- 2) Press <Home> button on the remote control.
- 3) Select <Setting>, then press <OK>.
- 4) Select <Advanced Setup>, press right cursor to choose <Version Info.>, then press <OK>, the software version and other information will display on the TV screen as below:

Mainboard:XXX.XXX

Driver:XXXXXX XXXXXXXX

BDP25XX

<http://www.philips.com/support>

Caution: The set must not be power off during upgrading, otherwise the Main board will be damaged entirely.

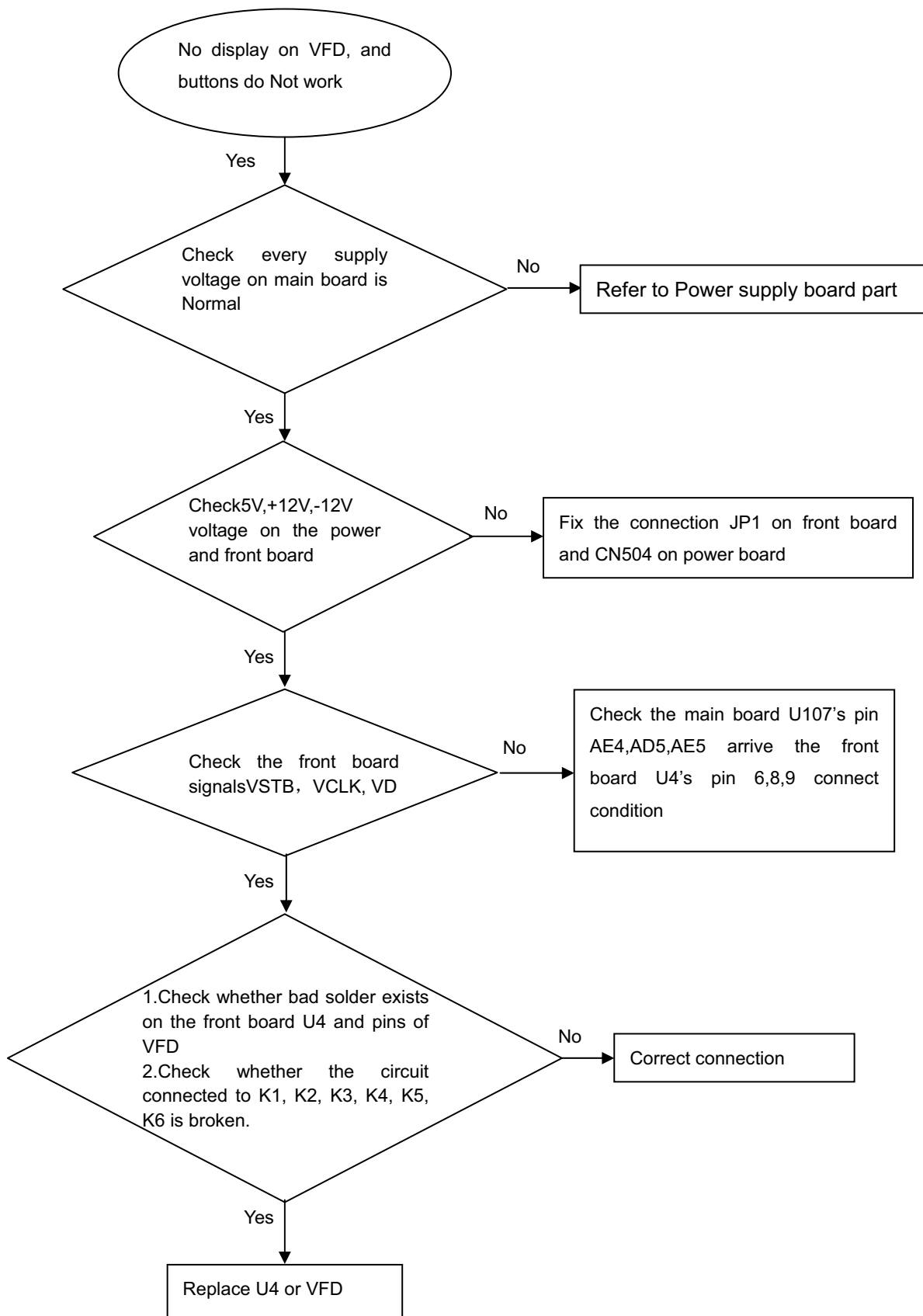
DVD Region code change

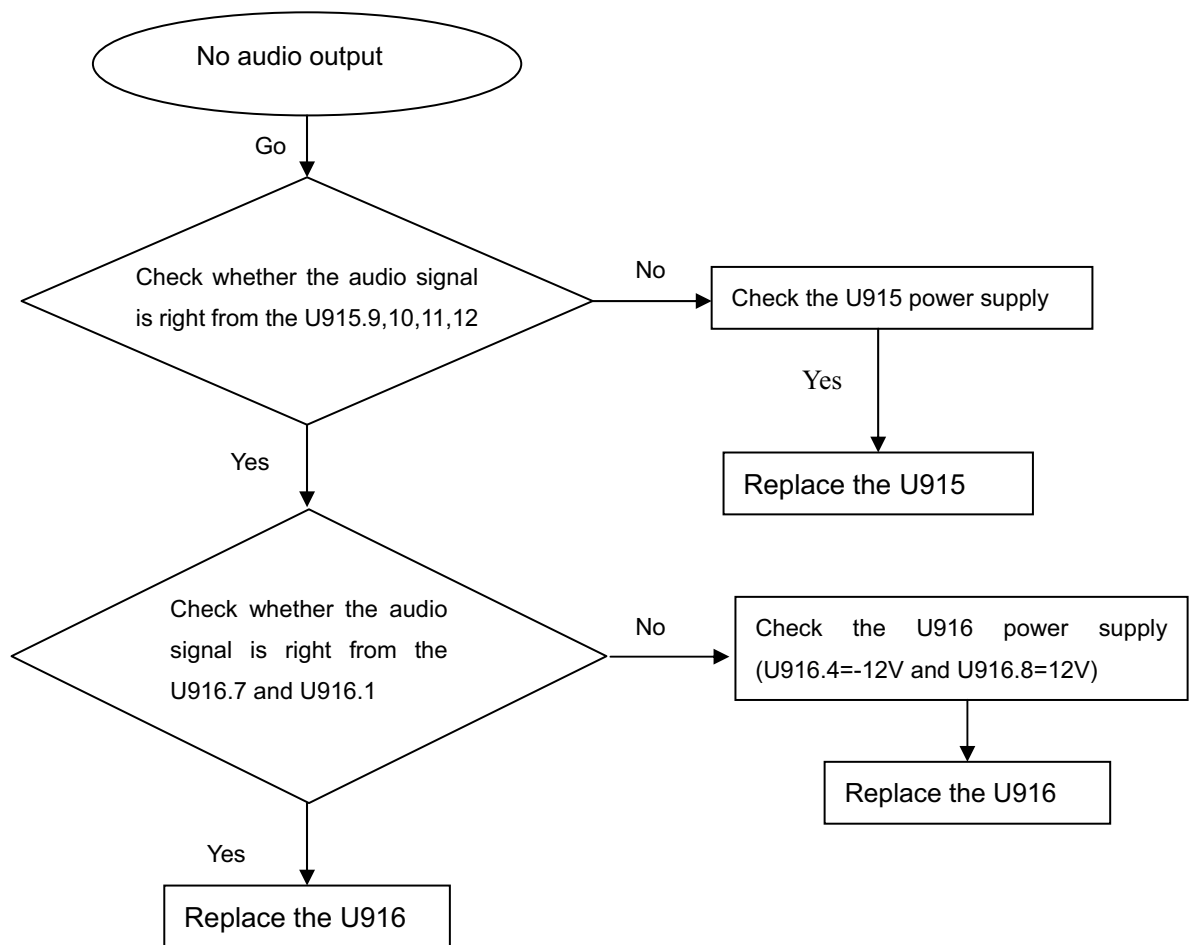
- 1). Power on the set and keep no disc.
- 2). In the Home menu, press <6><6><6><6> button.
- 3). Input below new region number by the remote control, then it will change after restart the player.

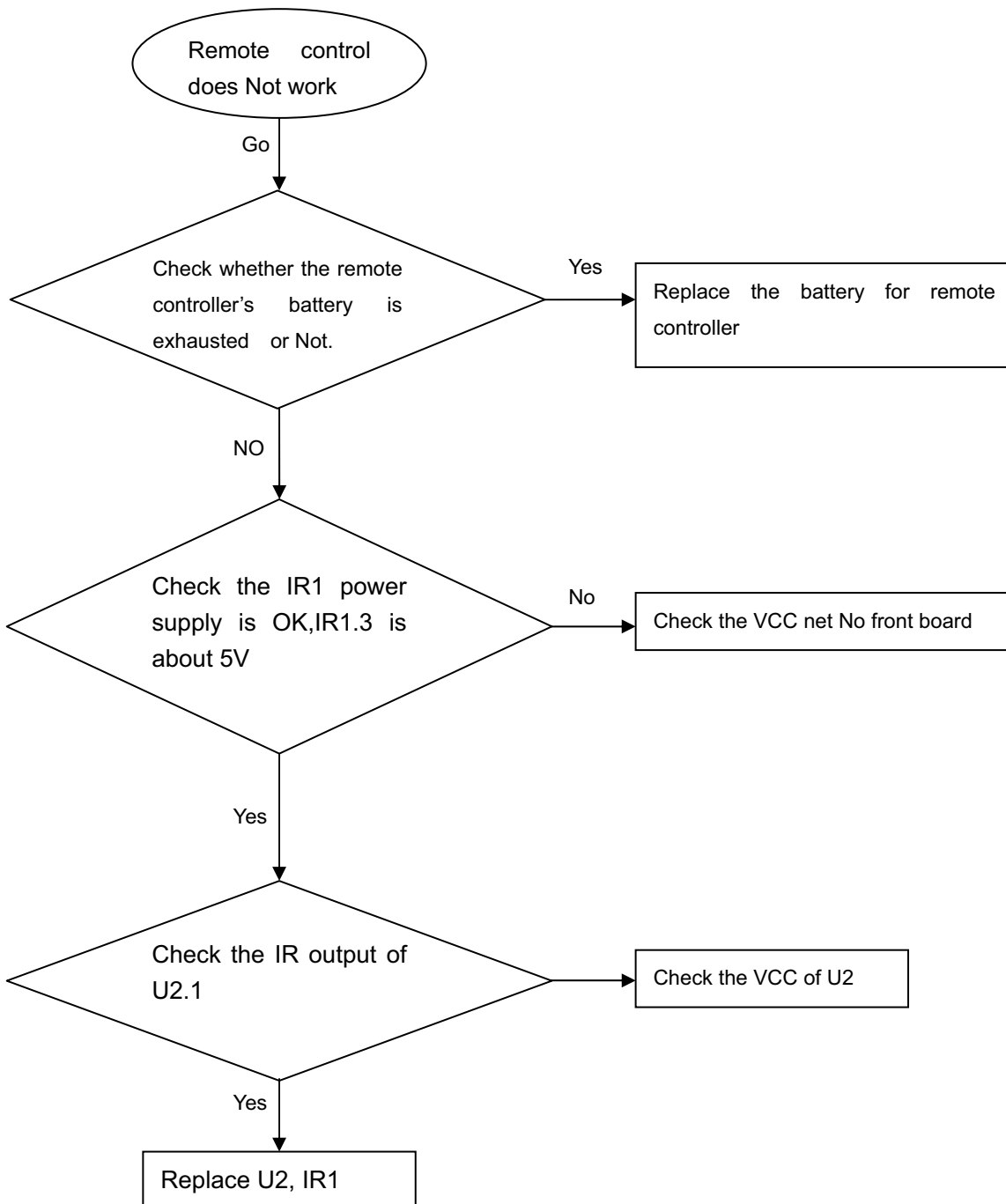
Remark:

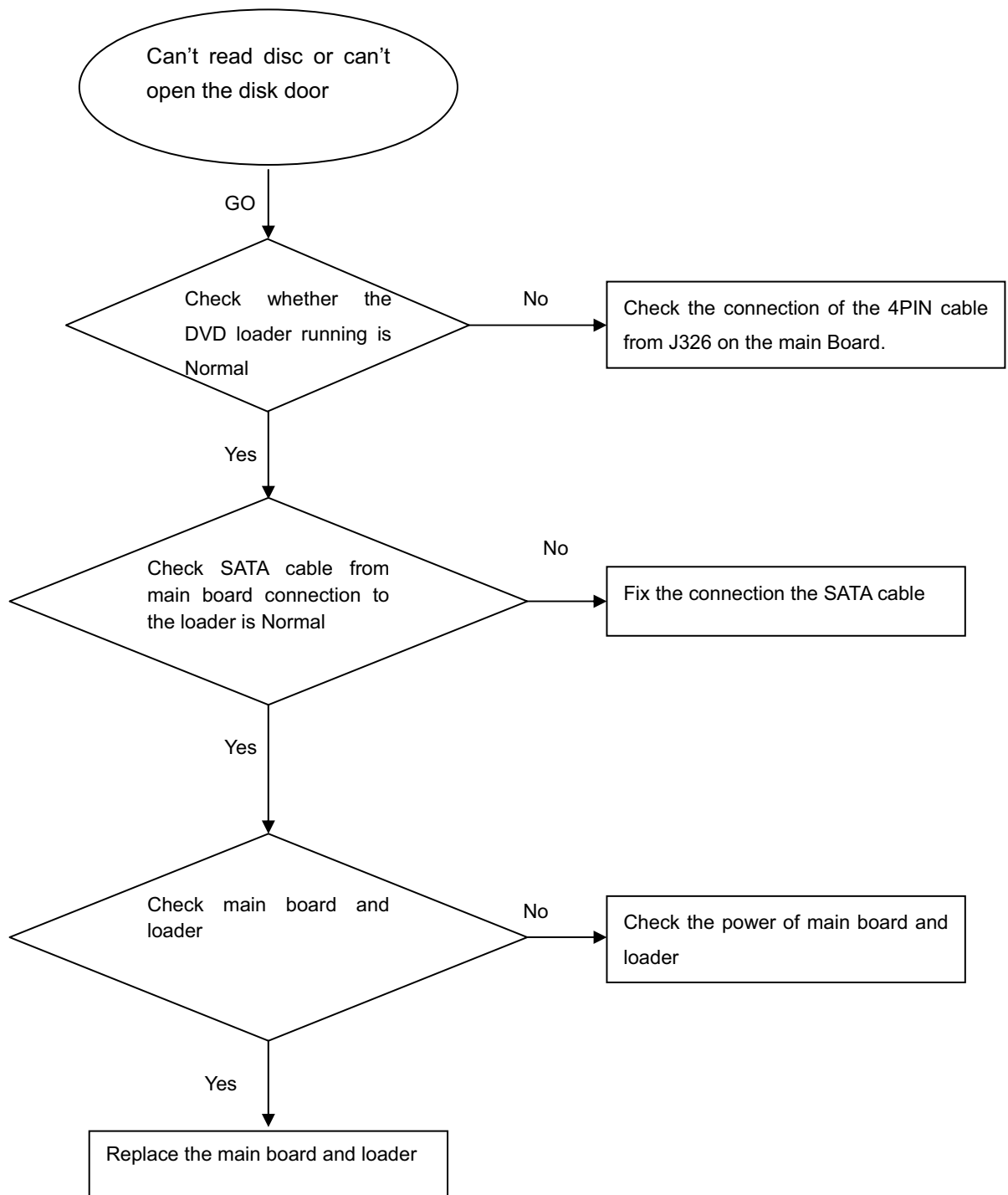
1. There is only 12/05 at present, if PHILIPS add others regions, we will provide the method change DVD region.
2. BD disc region code change only by upgrade software.

No display on VFD, and buttons do Not work

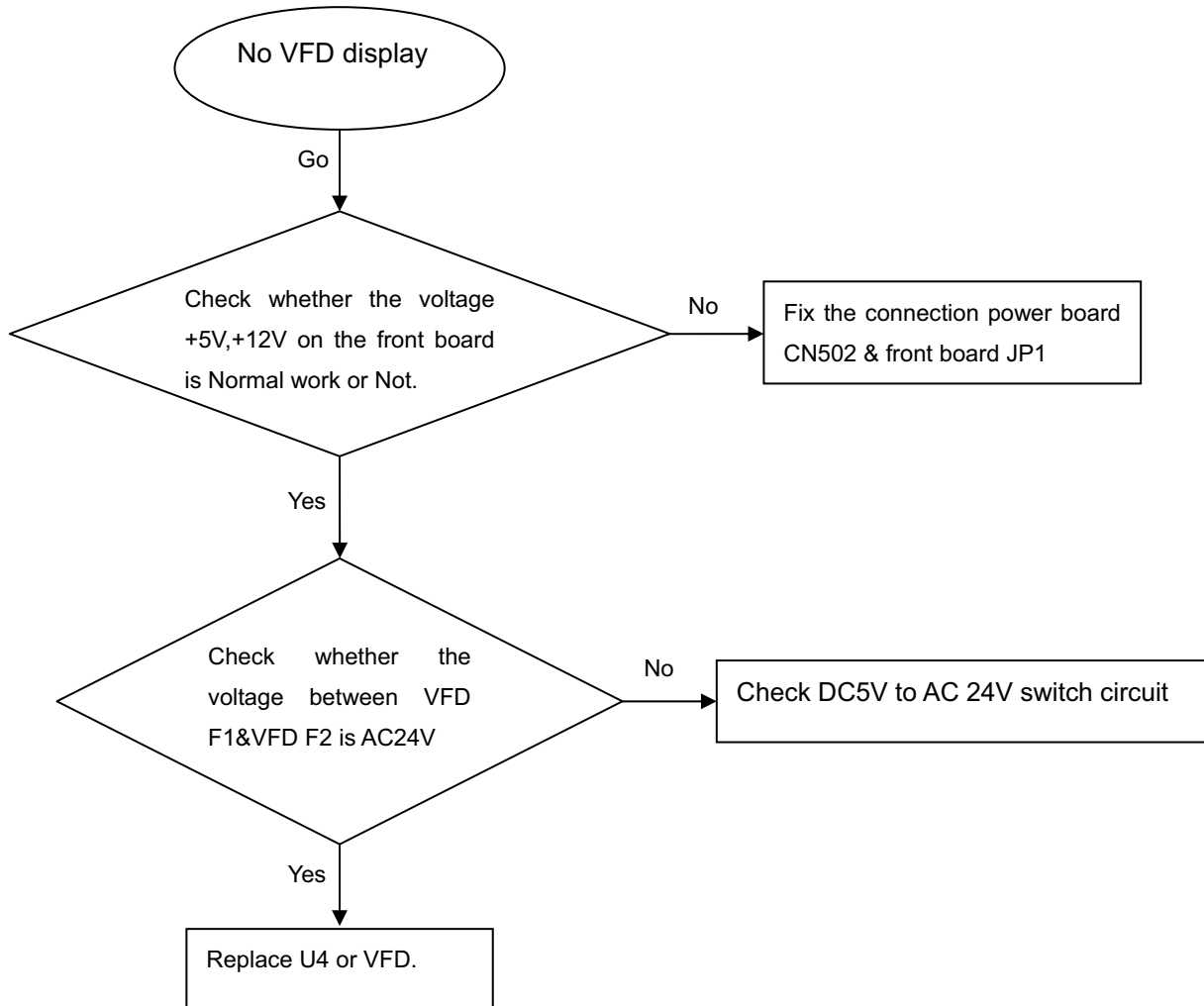


No audio output

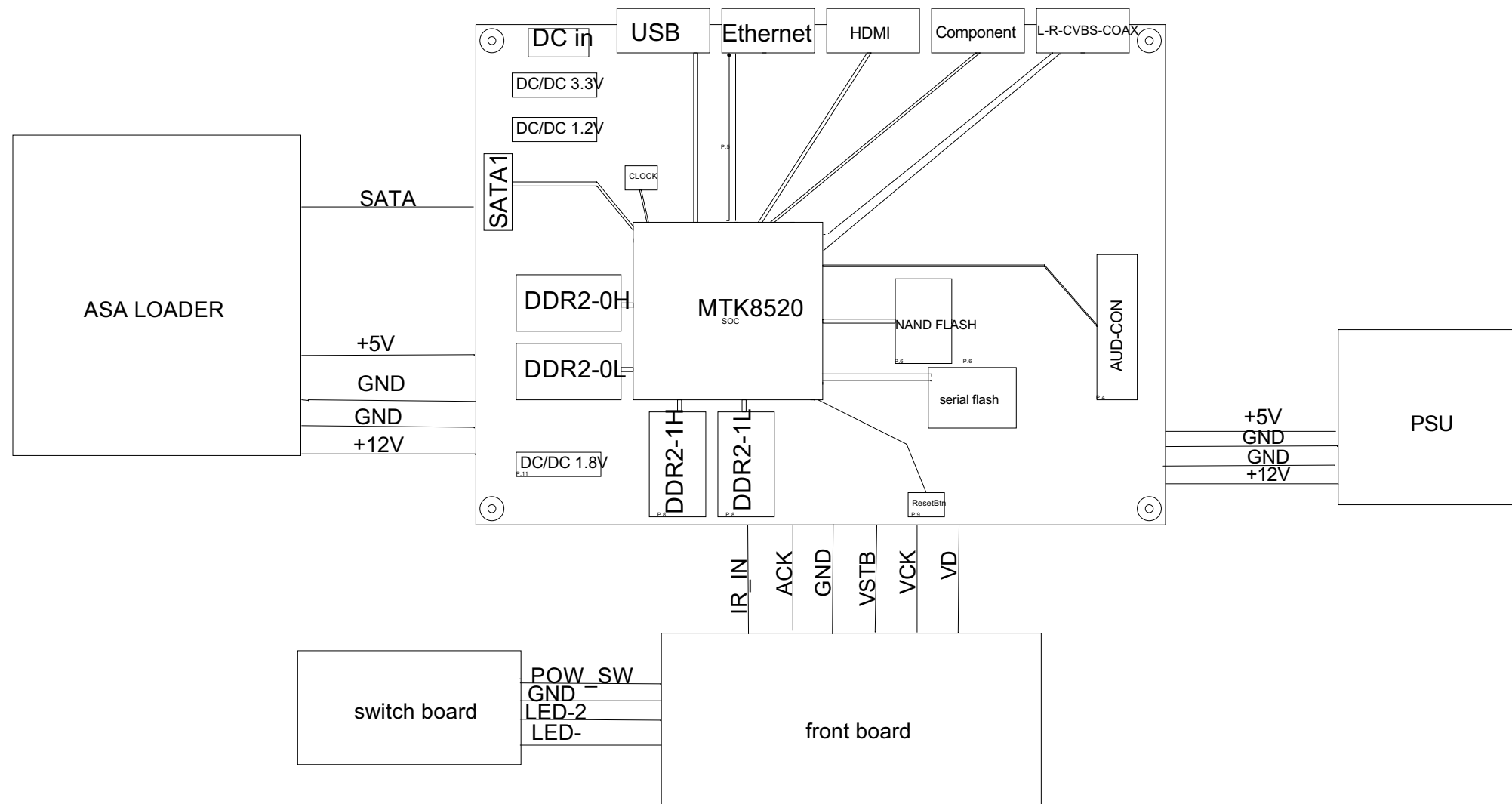
Remote control does Not work

Can't read disc or can't open the disk door

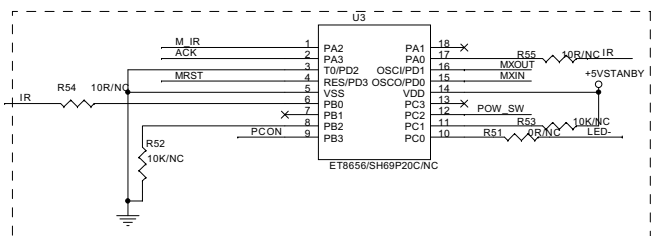
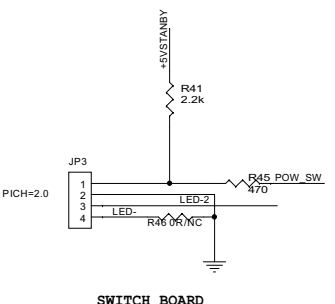
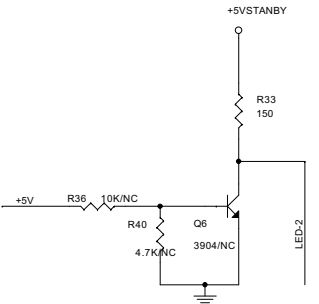
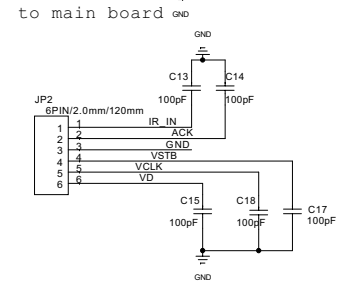
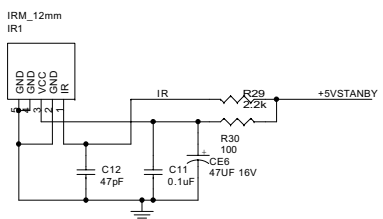
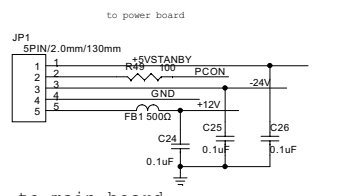
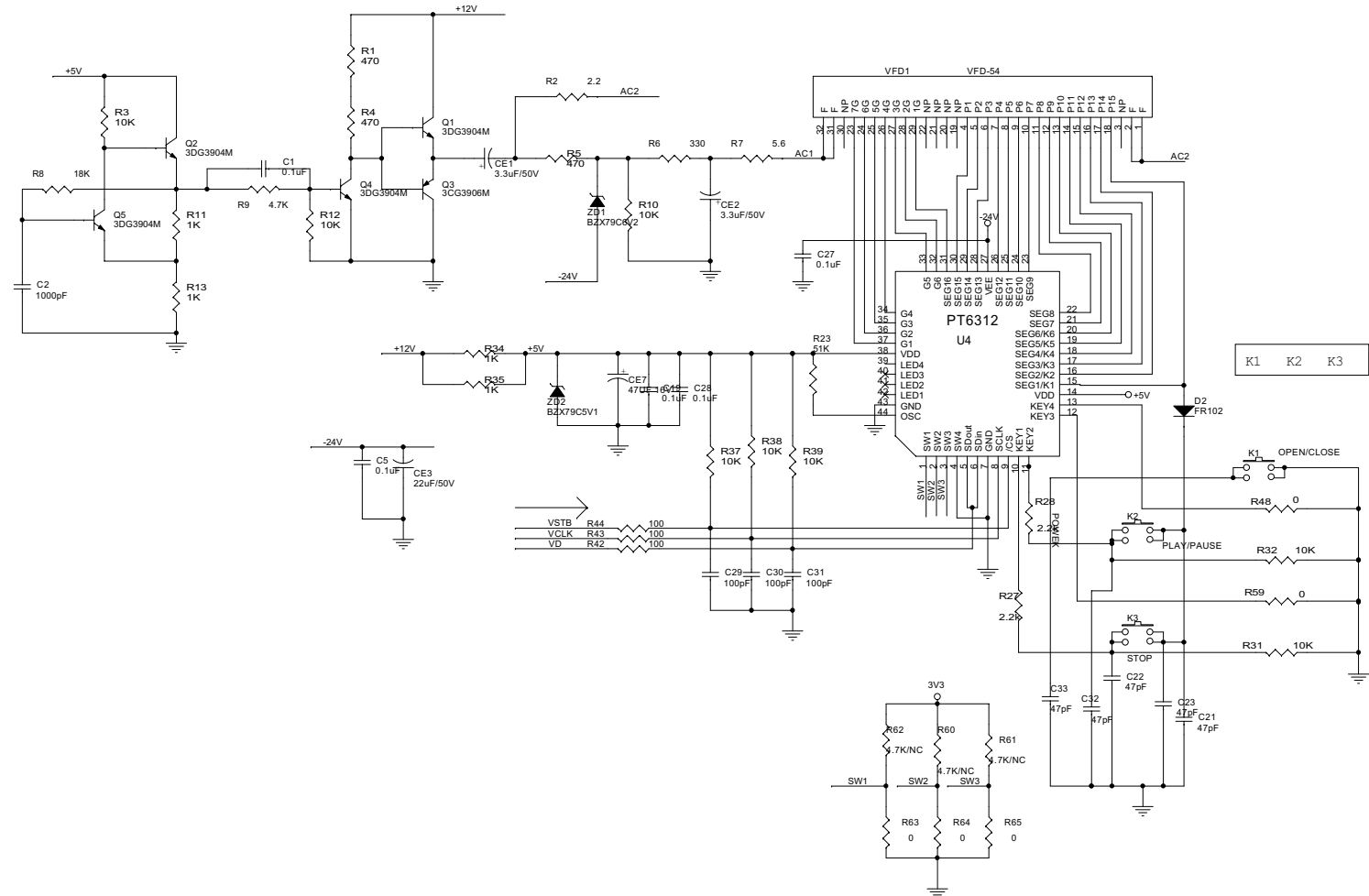
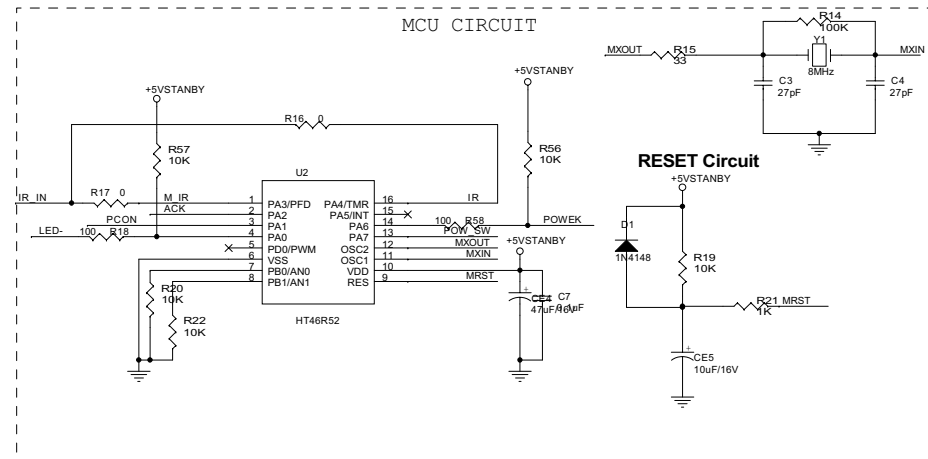
No VFD display



BDP2500 Wiring Diagram

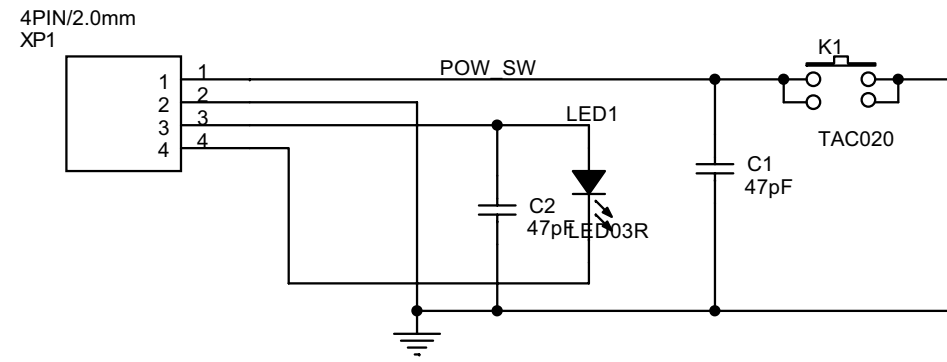


Front Board Electric Diagram:

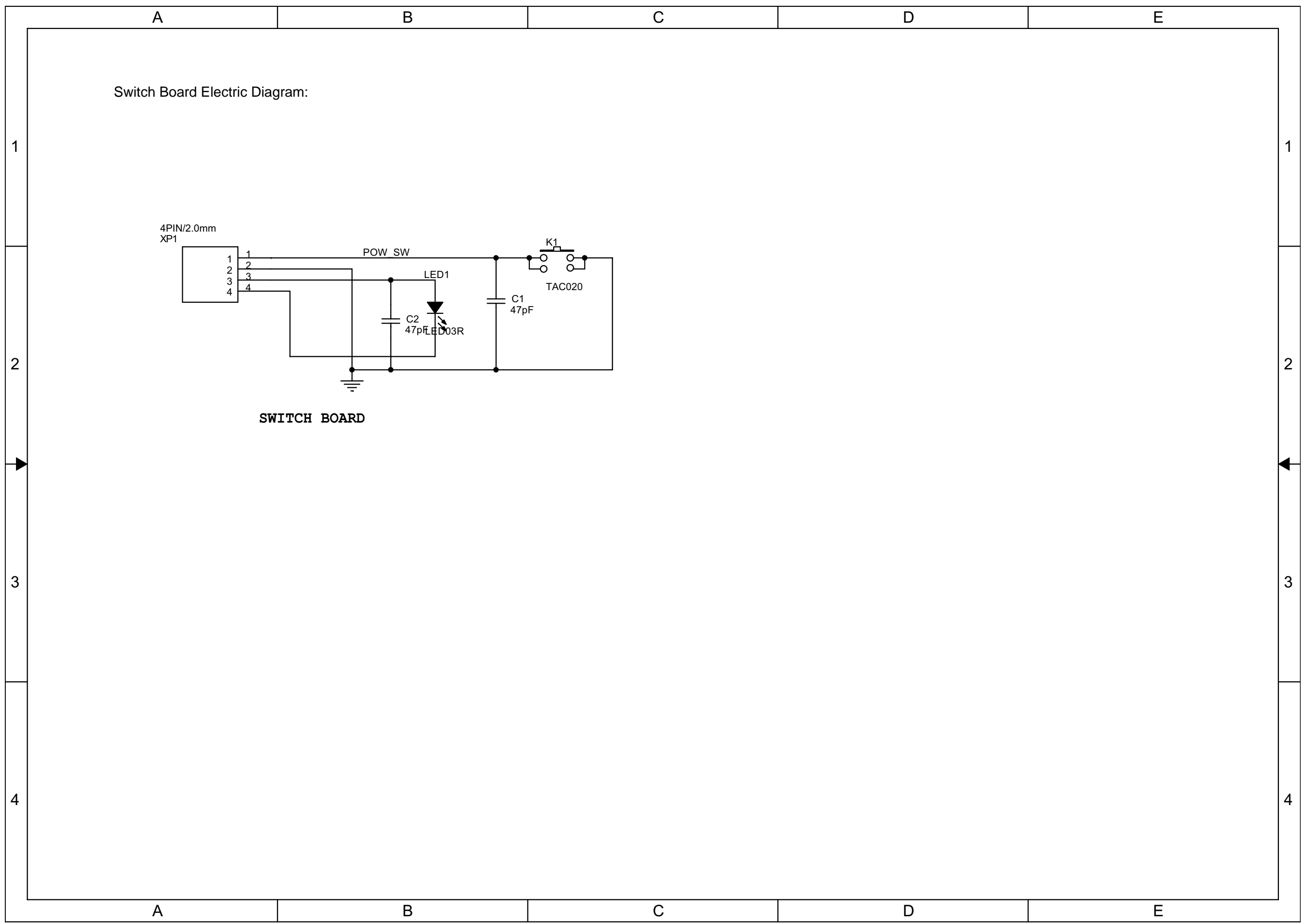


	USE	UNUSE
SH69P20C	R229	R230
ET8656	R230	R229

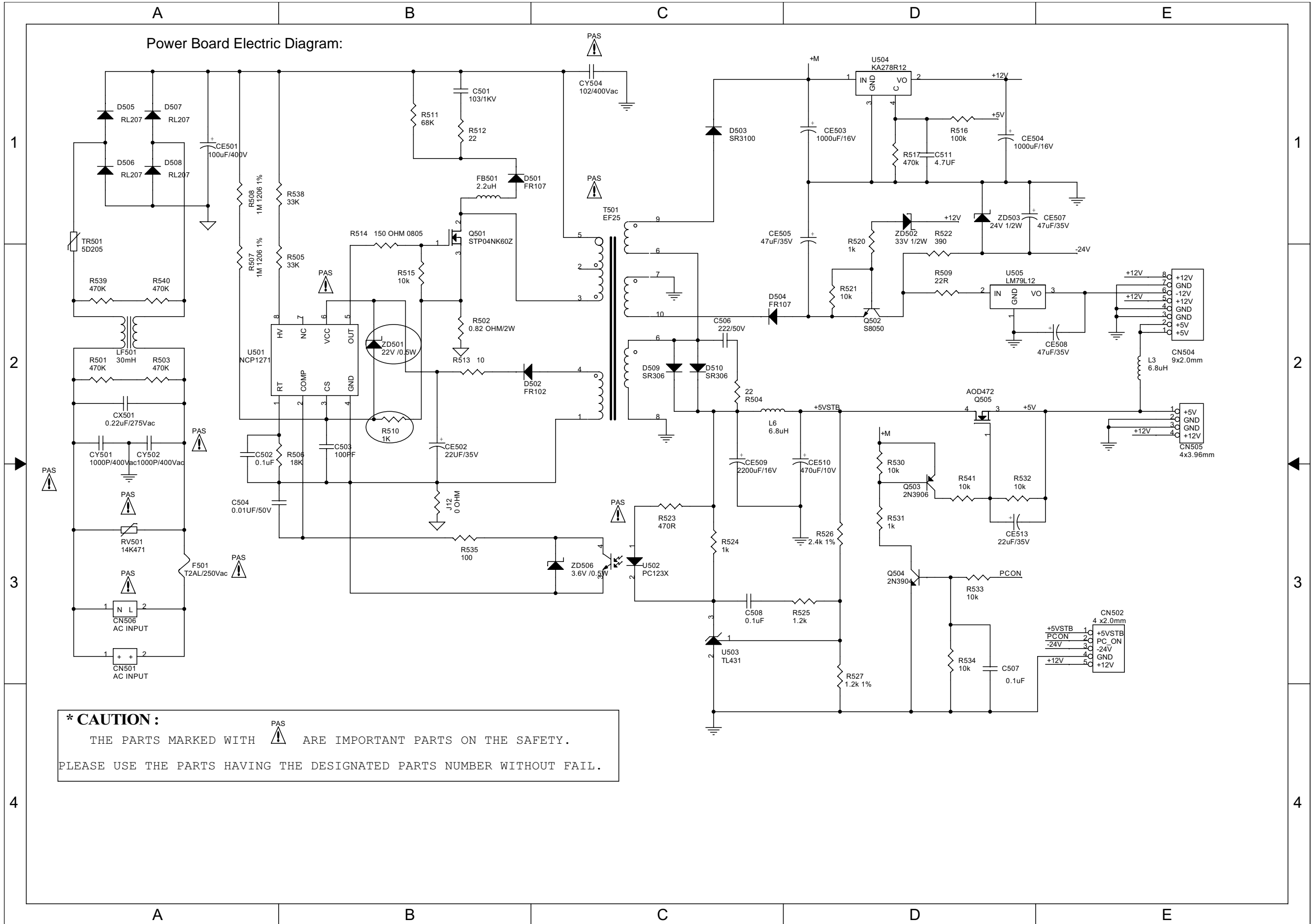
Switch Board Electric Diagram:




SWITCH BOARD

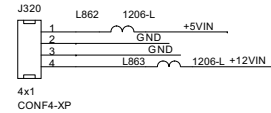
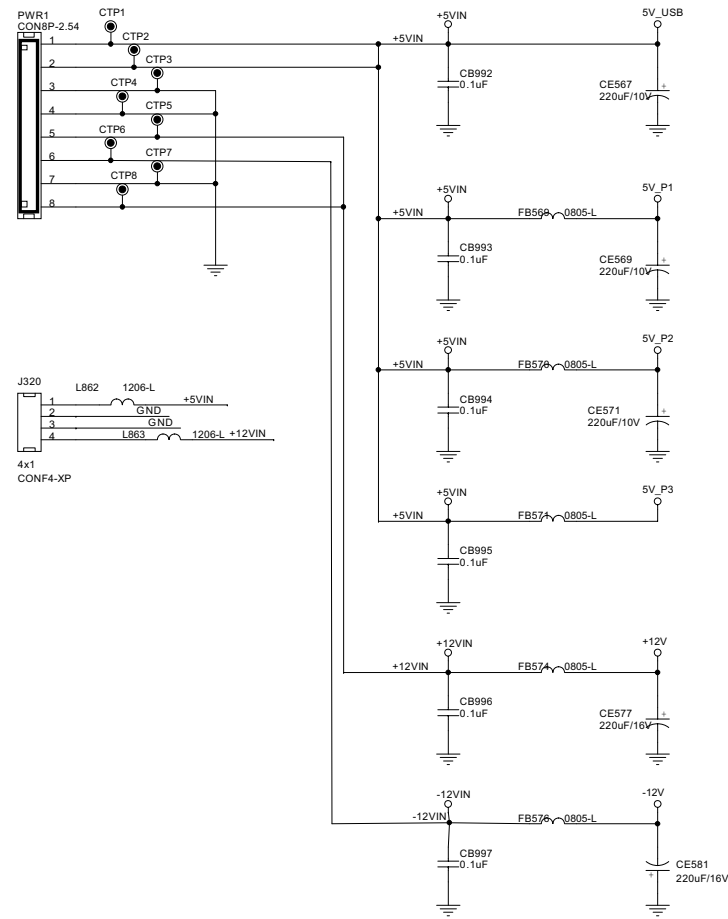


Power Board Electric Diagram:

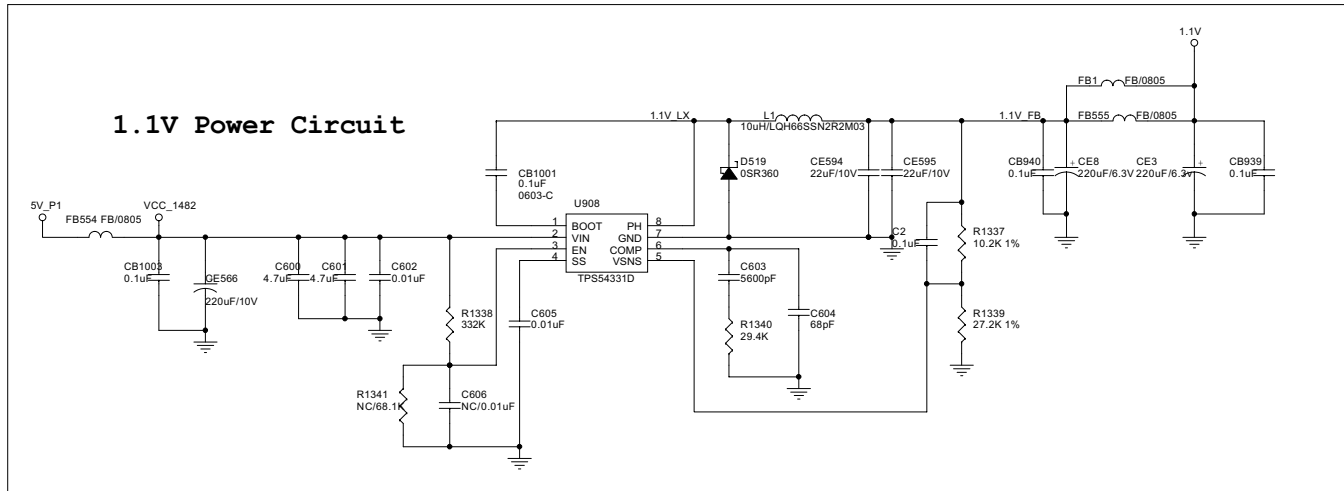


*** CAUTION :**
 THE PARTS MARKED WITH  ARE IMPORTANT PARTS ON THE SAFETY.
 PLEASE USE THE PARTS HAVING THE DESIGNATED PARTS NUMBER WITHOUT FAIL.

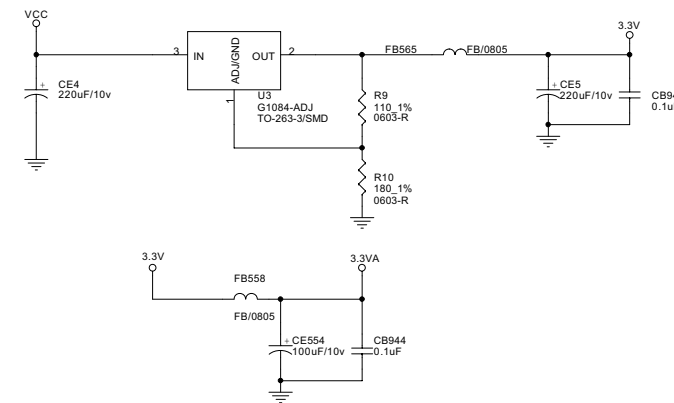
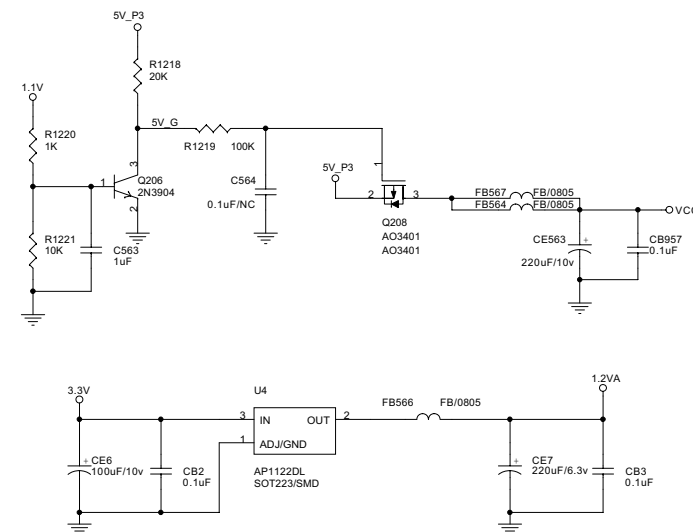
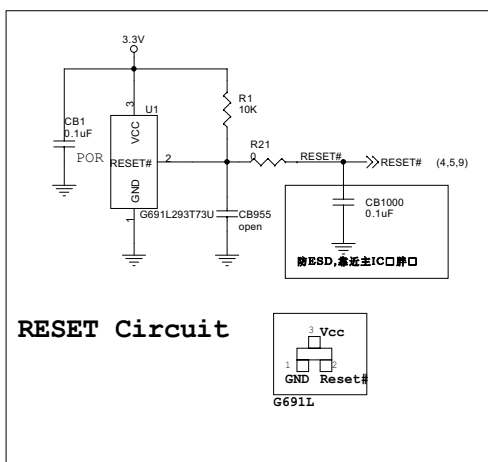
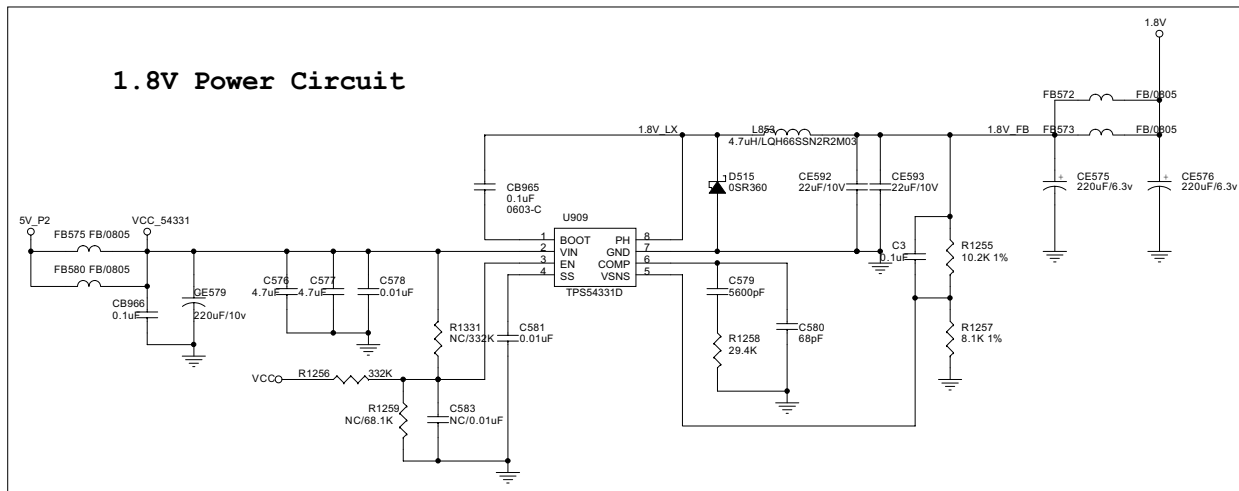
Main Board Electric Diagram: Power



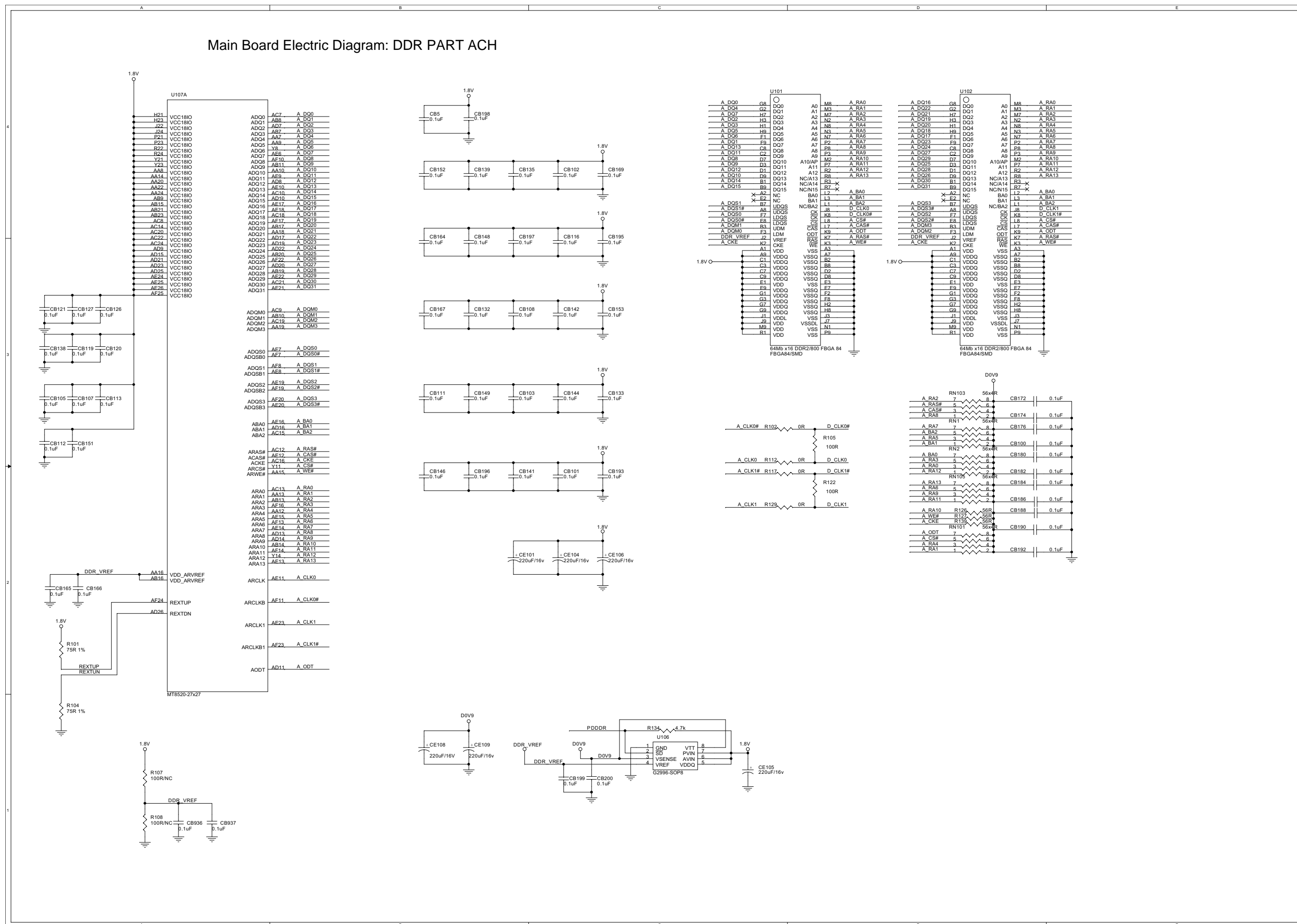
1.1V Power Circuit



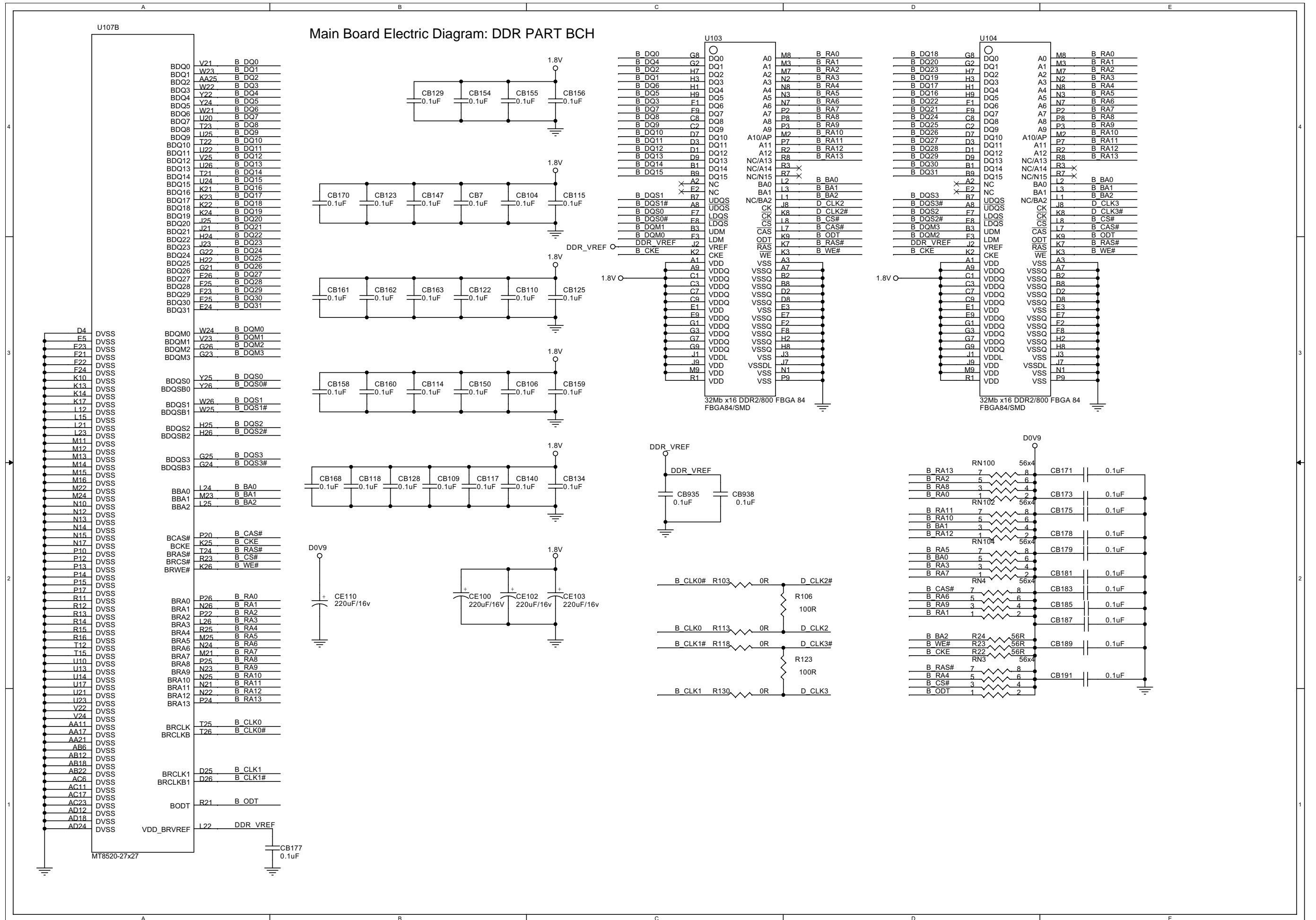
1.8V Power Circuit



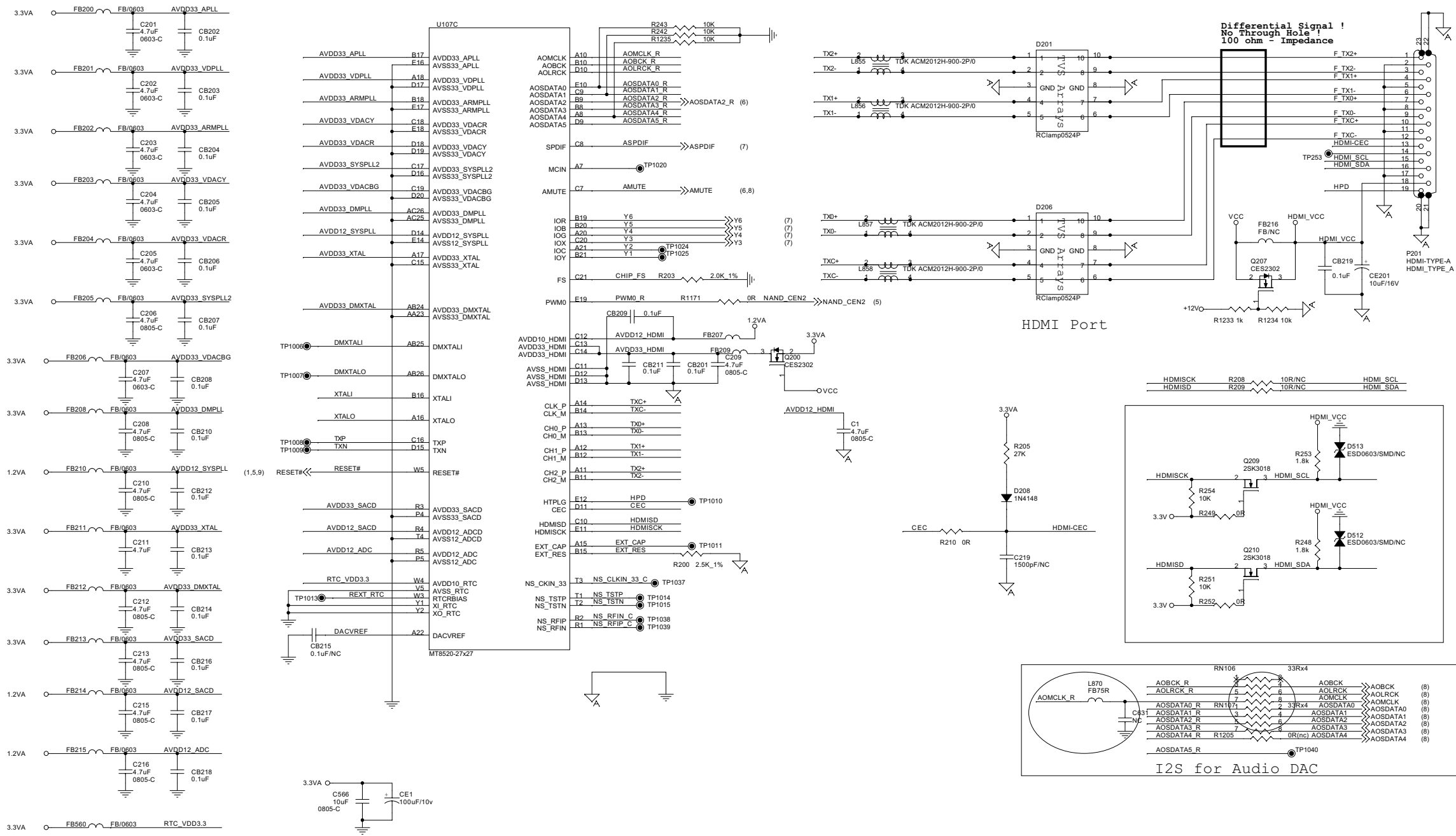
Main Board Electric Diagram: DDR PART ACH



Main Board Electric Diagram: DDR PART BCH

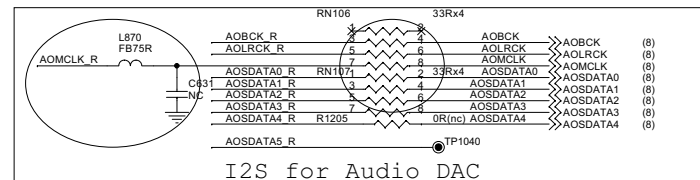
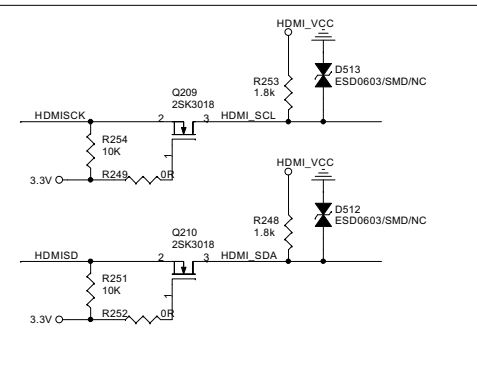


Main Board Electric Diagram: AV OUTPUT

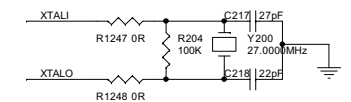


Differential Signal!
No Through Hole!
100 ohm Impedance

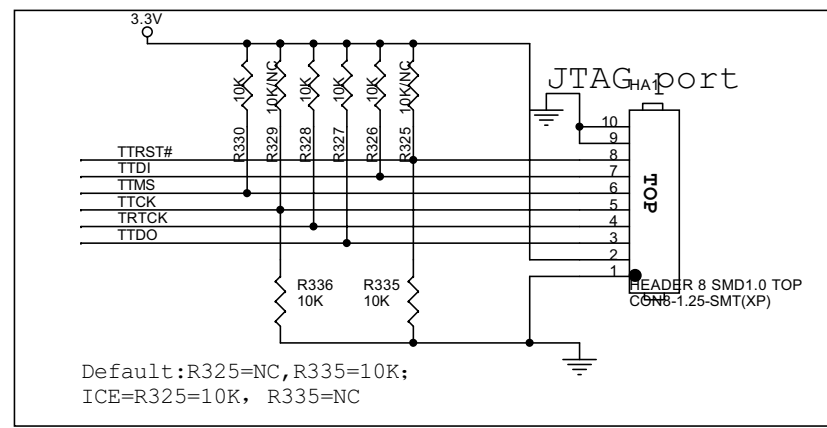
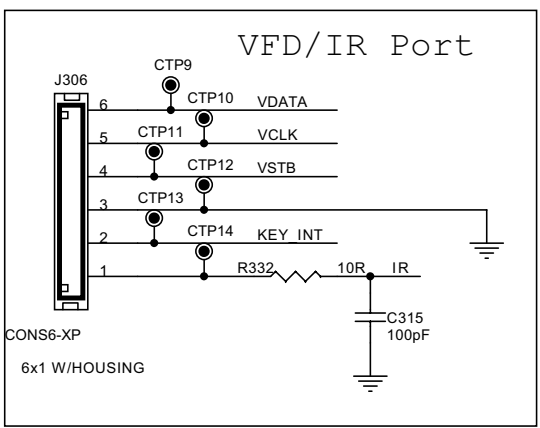
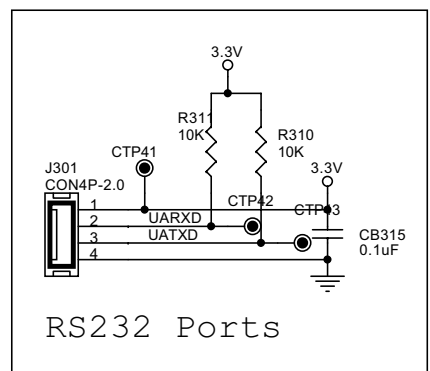
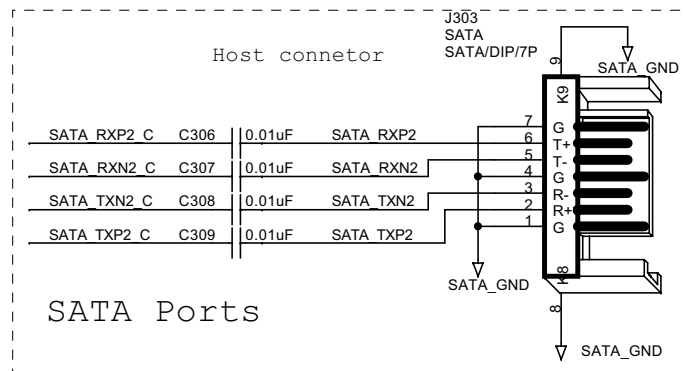
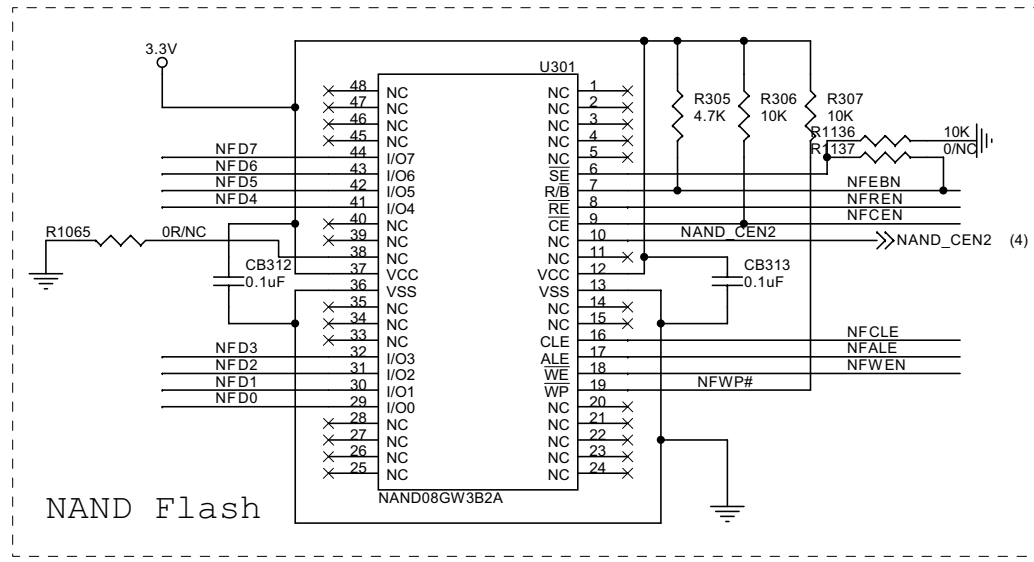
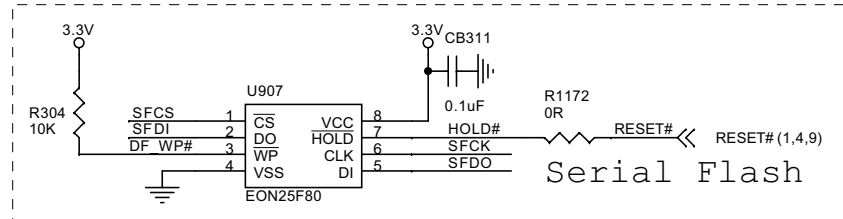
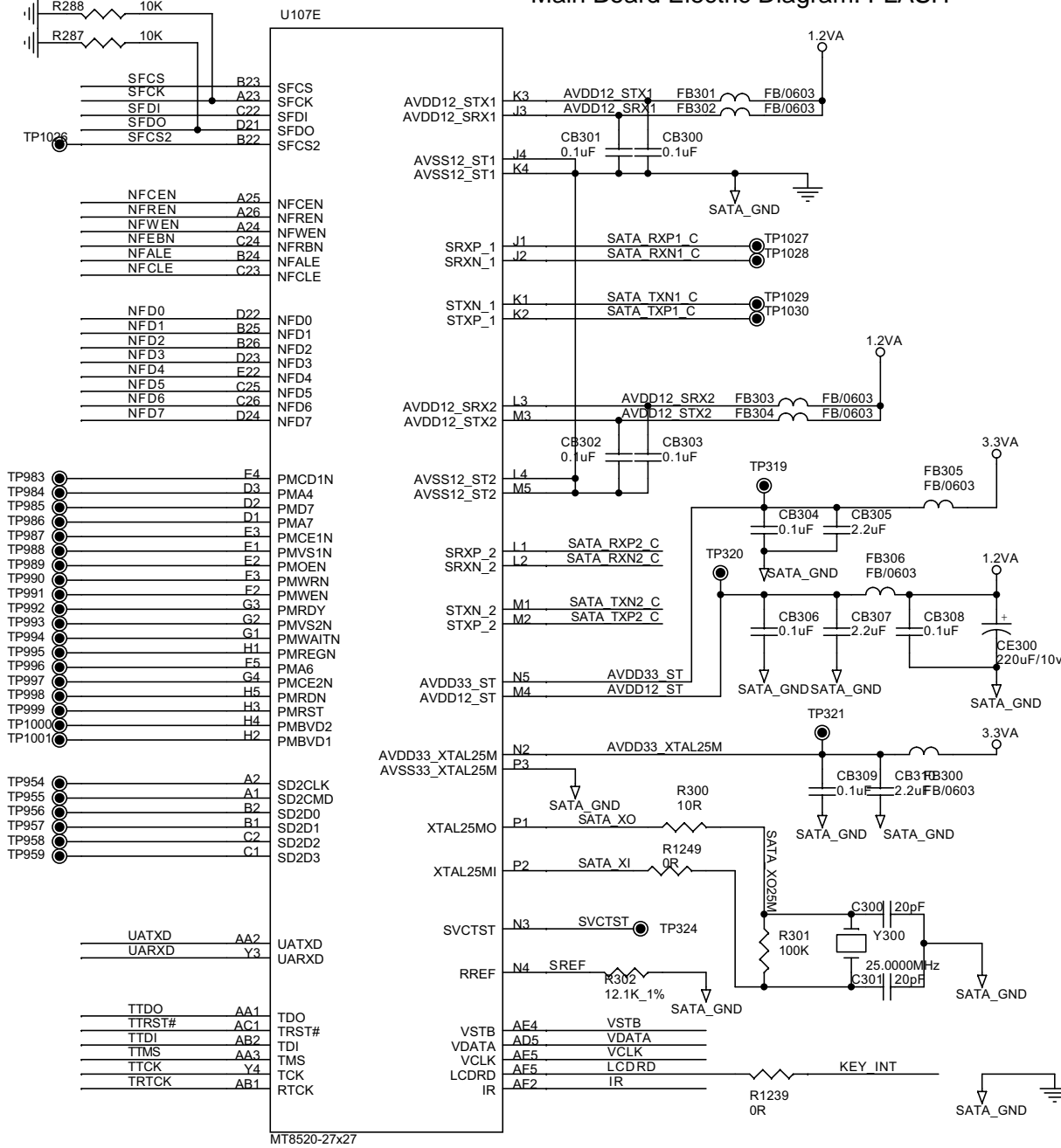
HDMI Port



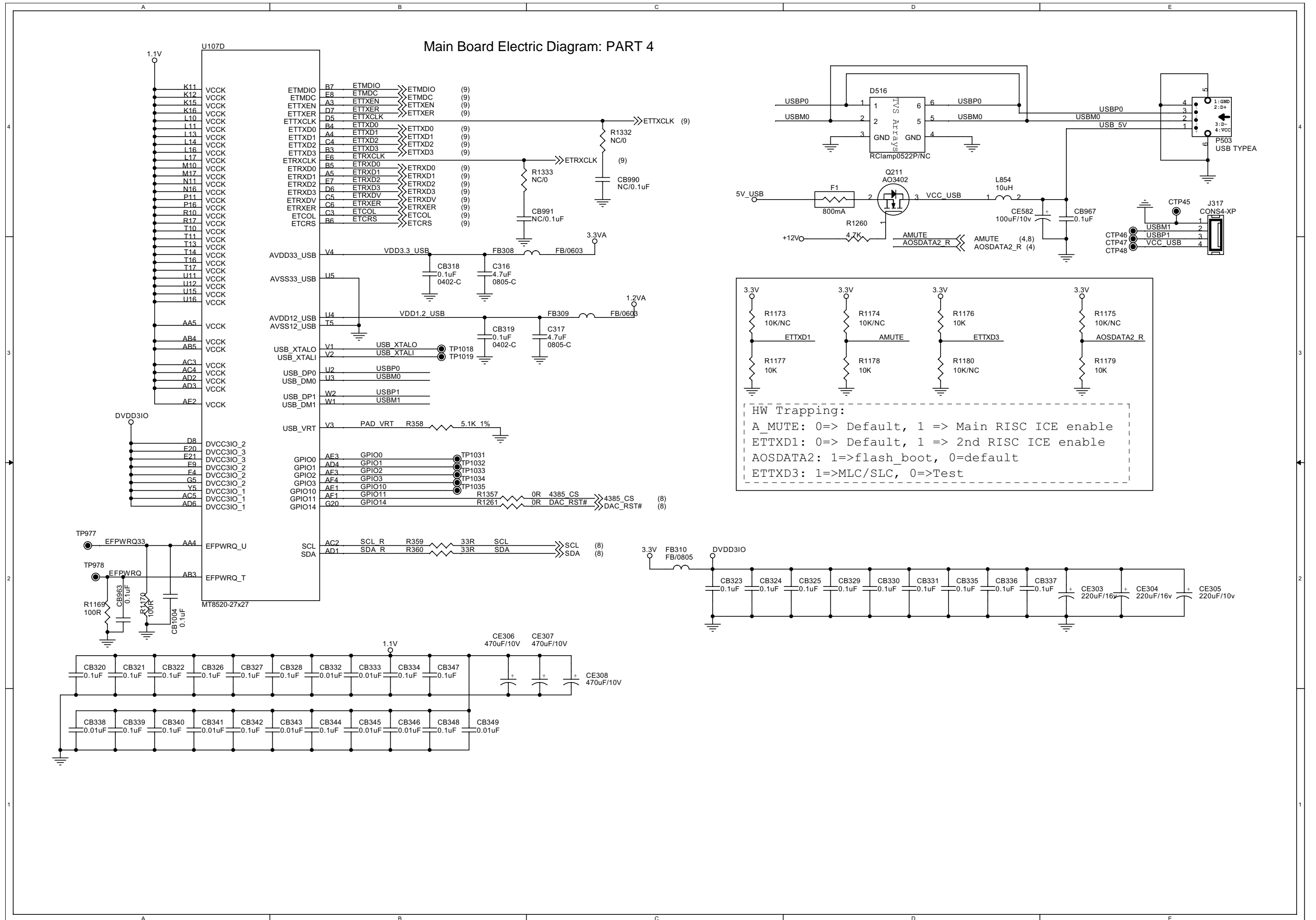
I2S for Audio DAC



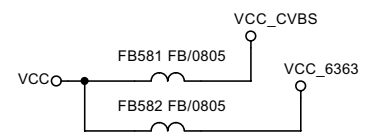
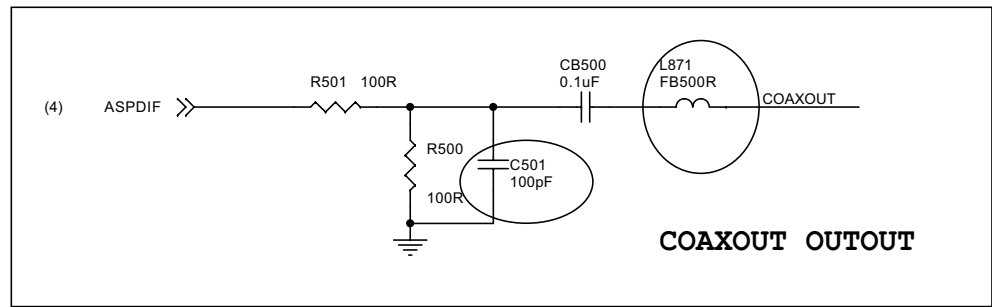
Main Board Electric Diagram: FLASH



Main Board Electric Diagram: PART 4

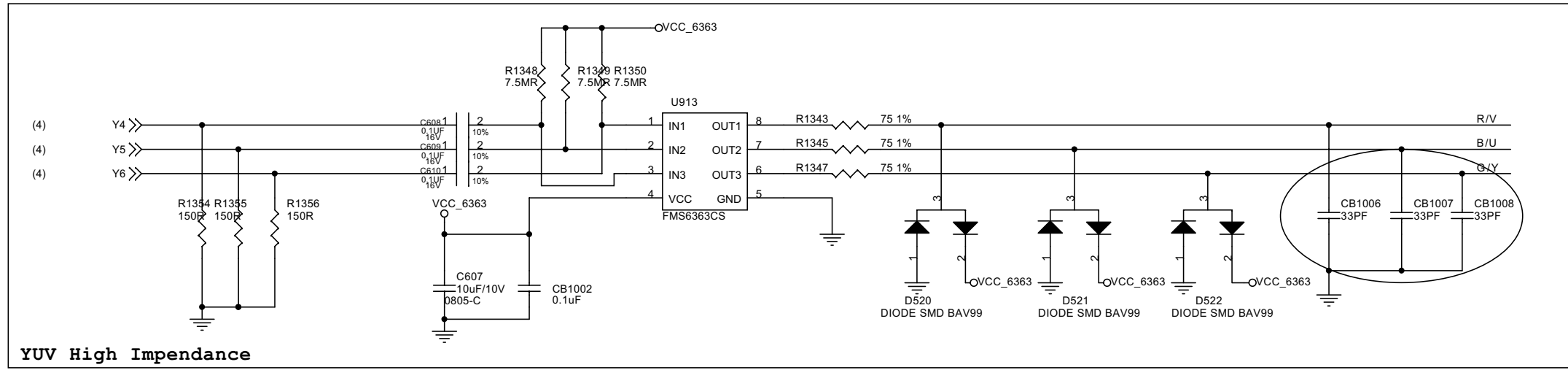
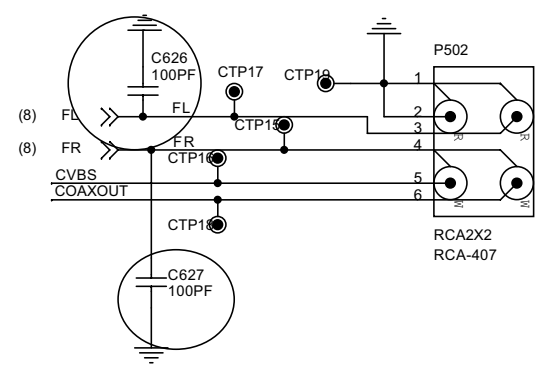
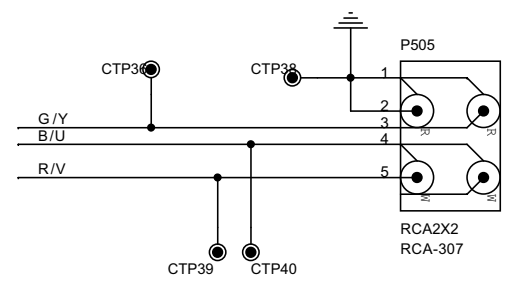
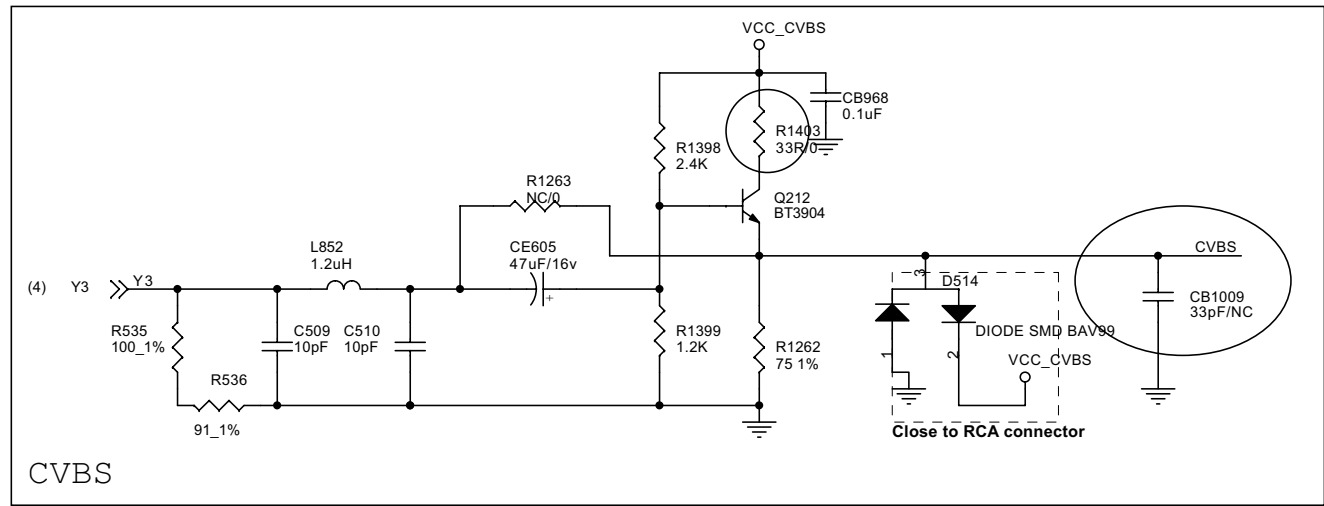


Main Board Electric Diagram: VIDEO OUTPUT & SPDIF OUTPUT



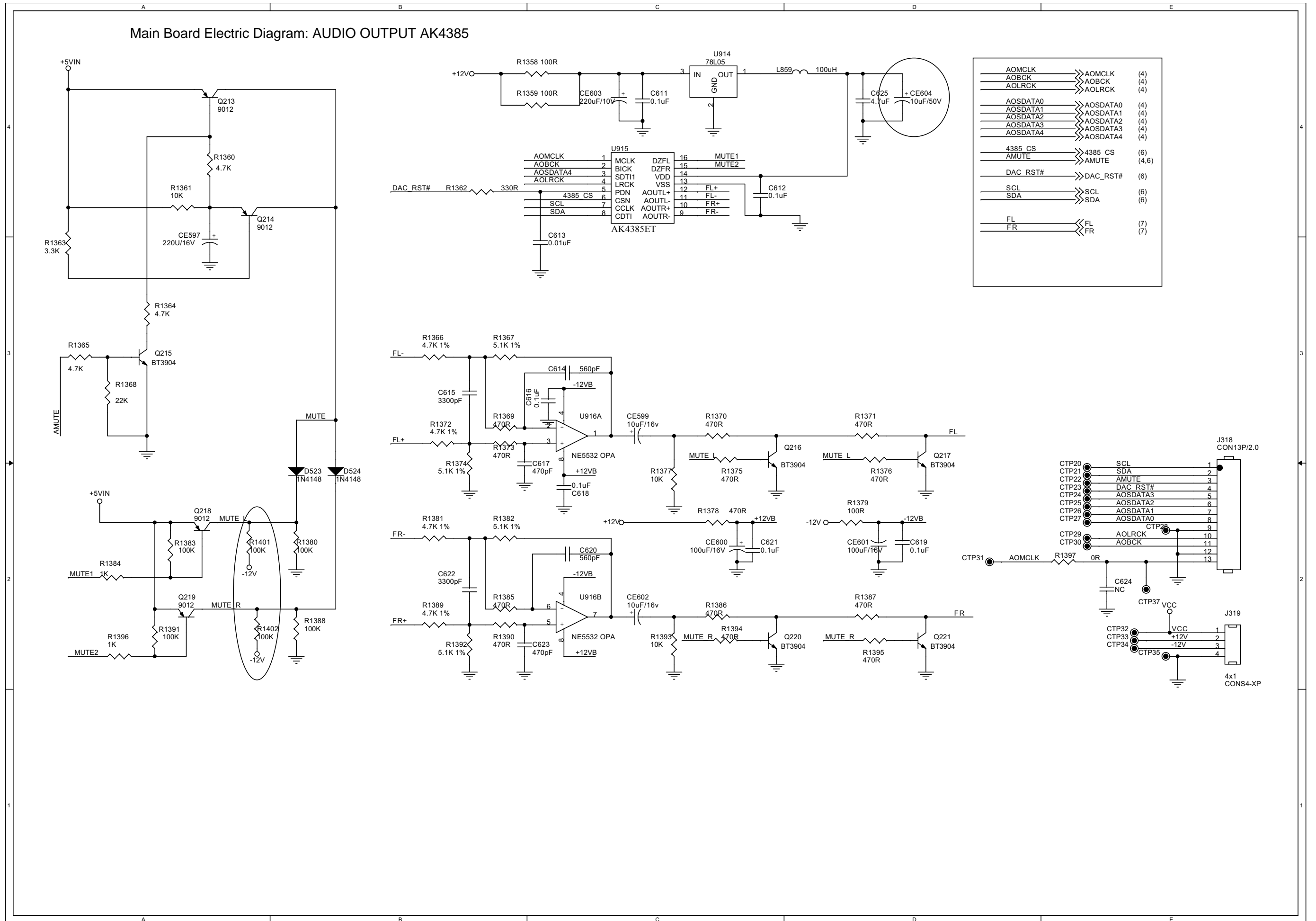
Low Impedance 箆ow Impedance circuit with Real Line
Hight Impedance: Hight Impedance circuit with Broken Line

Related PCB is match to SCH, but no hight Impedance circuit in Broken Line

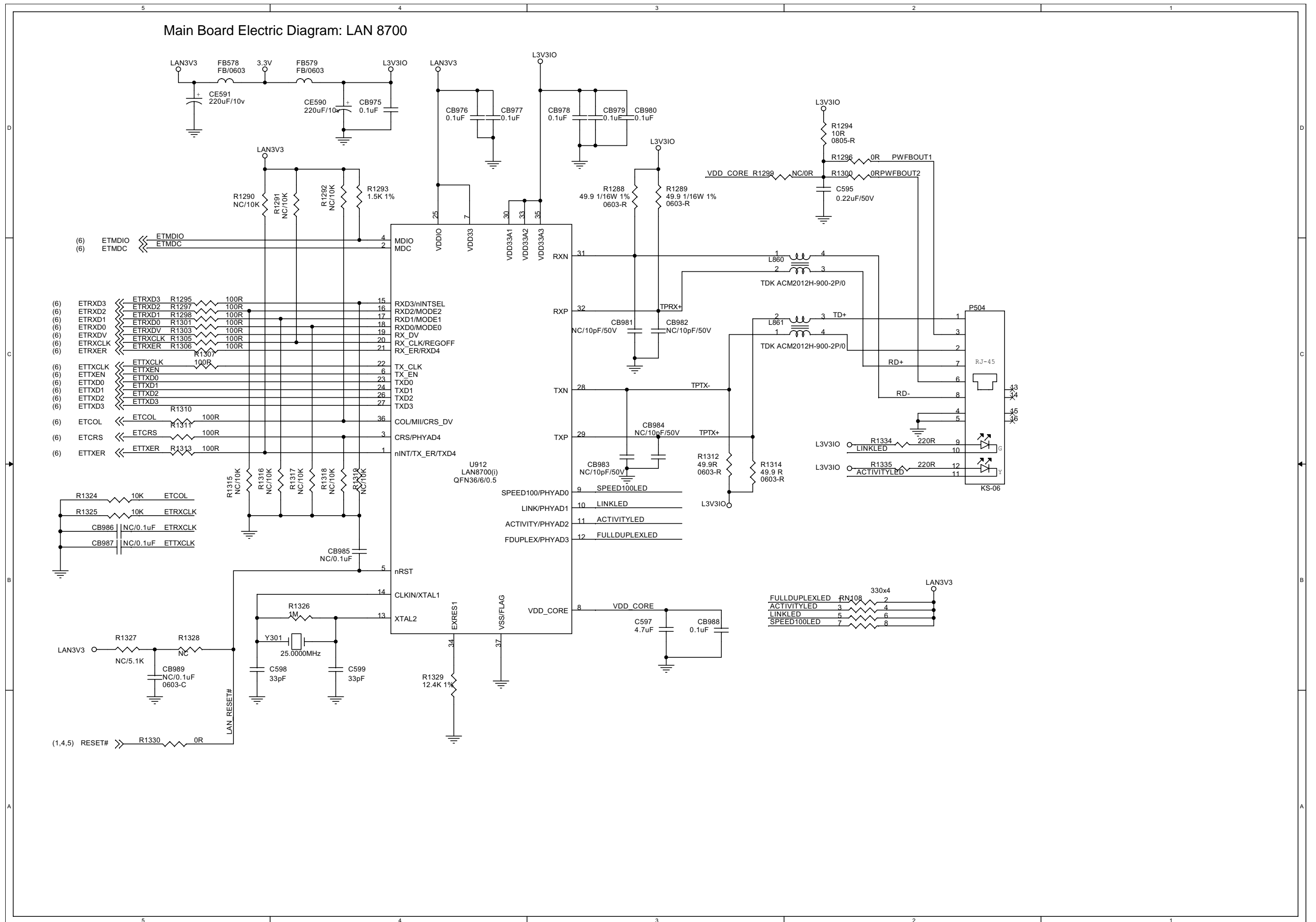


YUV High Impedance

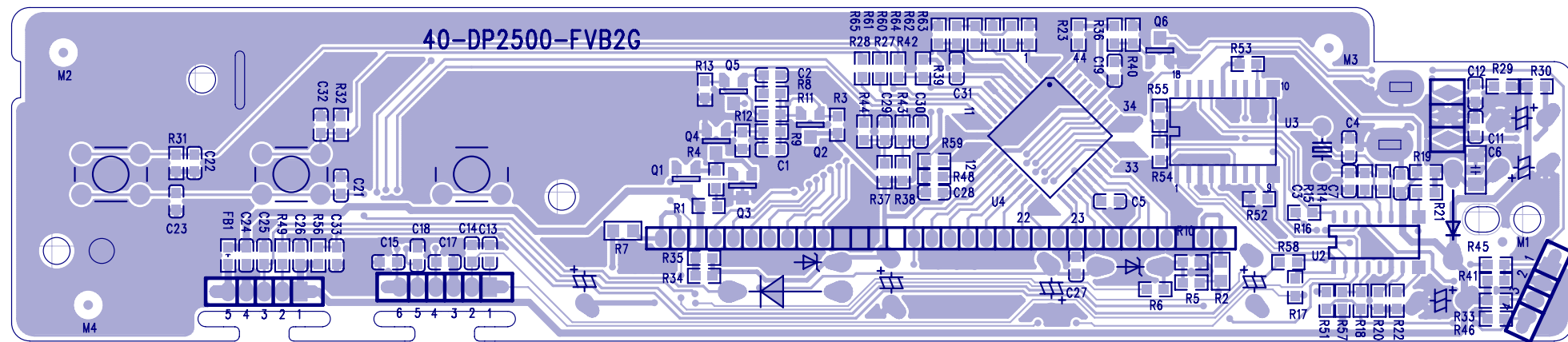
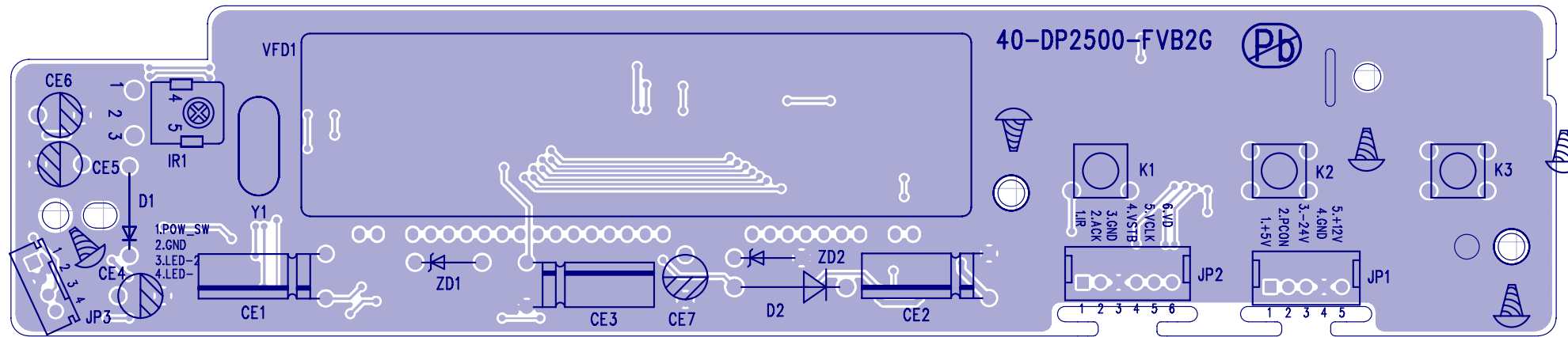
Main Board Electric Diagram: AUDIO OUTPUT AK4385



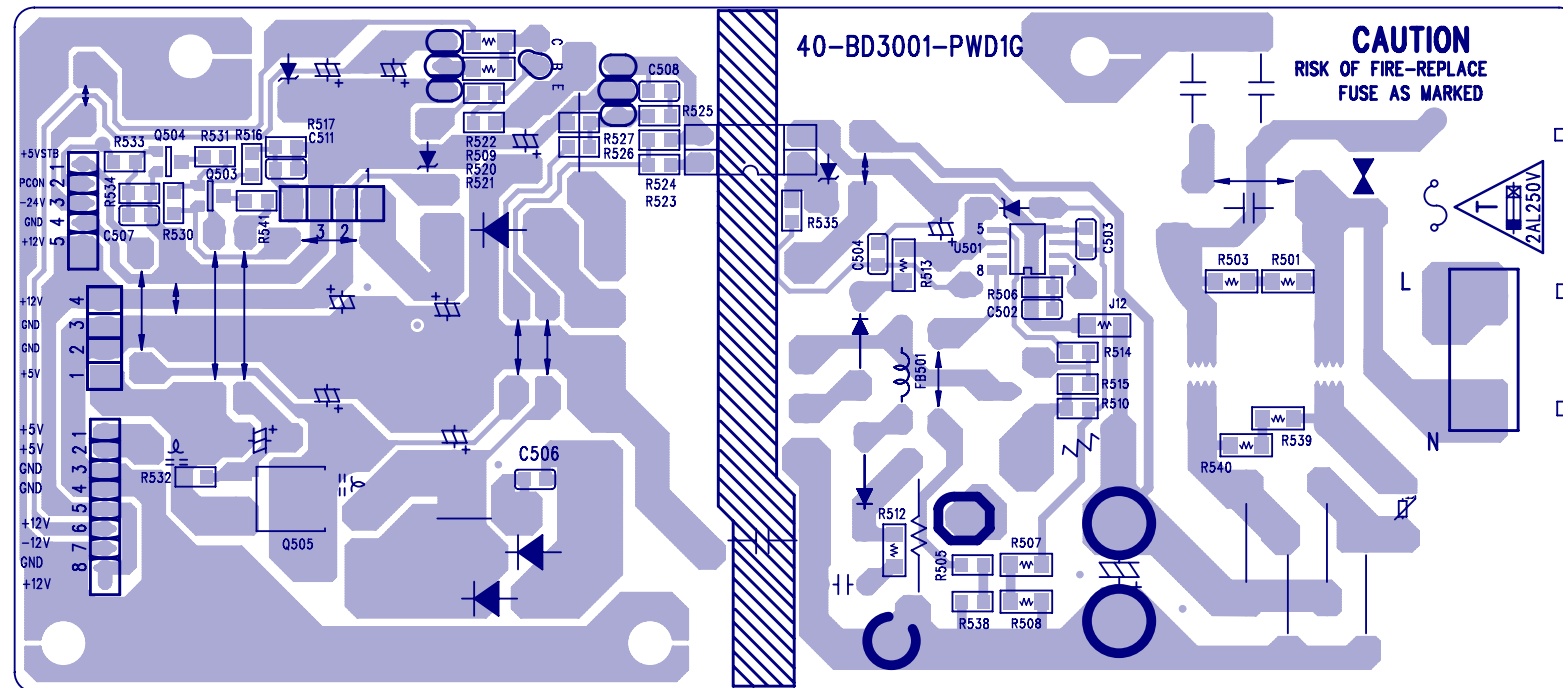
Main Board Electric Diagram: LAN 8700



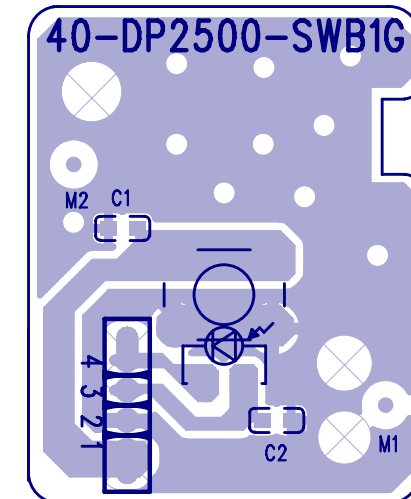
Front Board PCB-layout (Top and Bottom side):



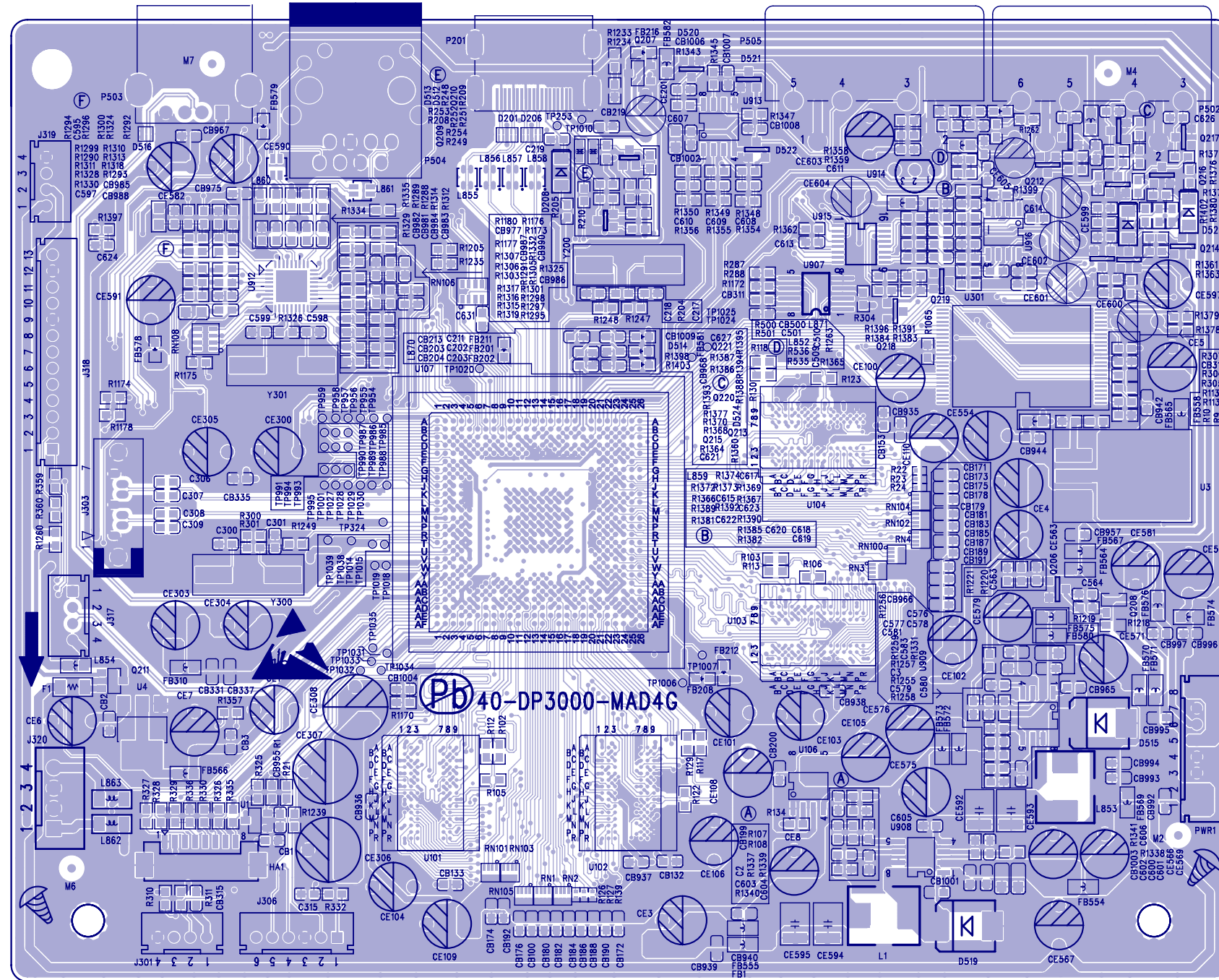
Power Board Electric Diagram:



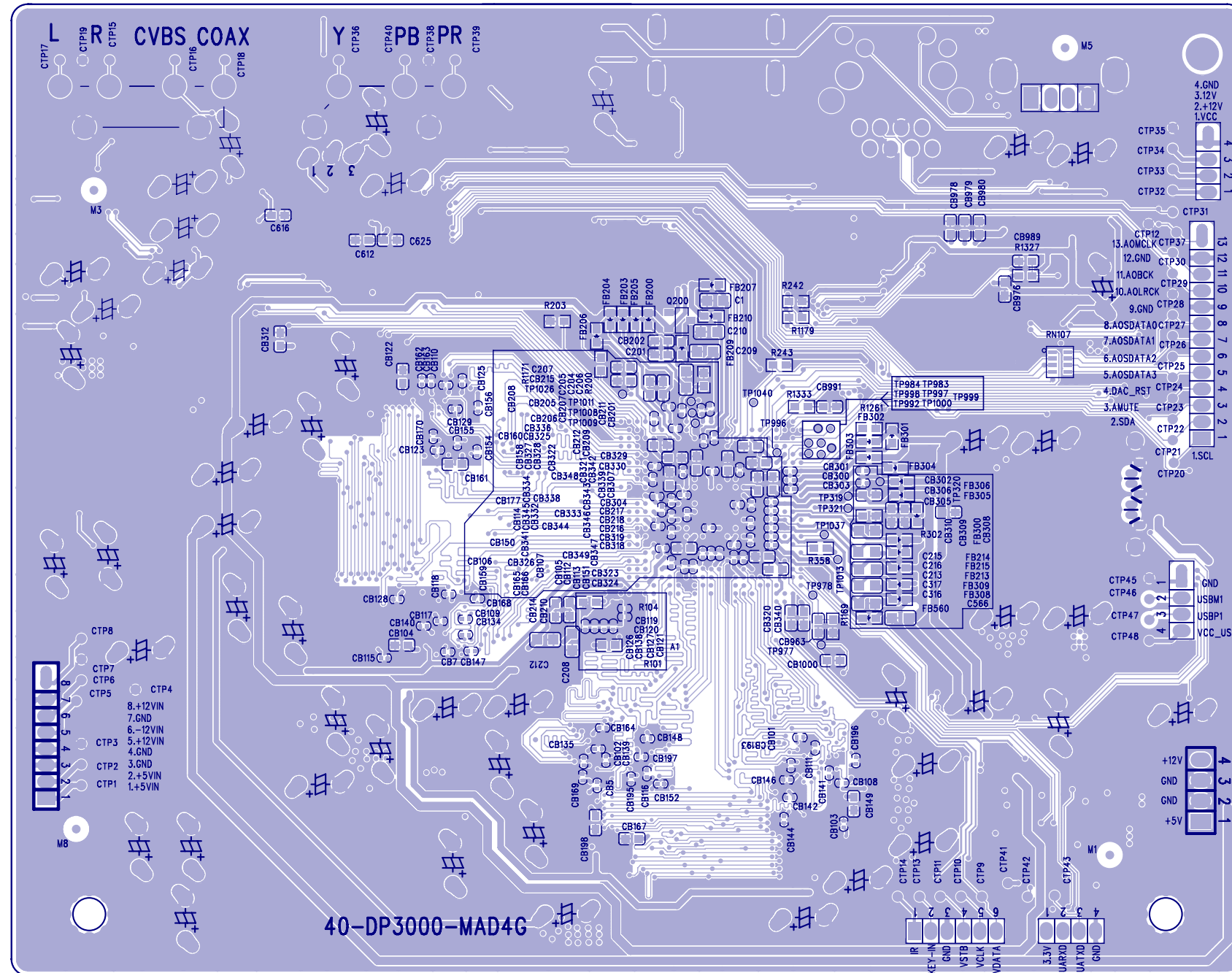
Switch Board Electric Diagram:



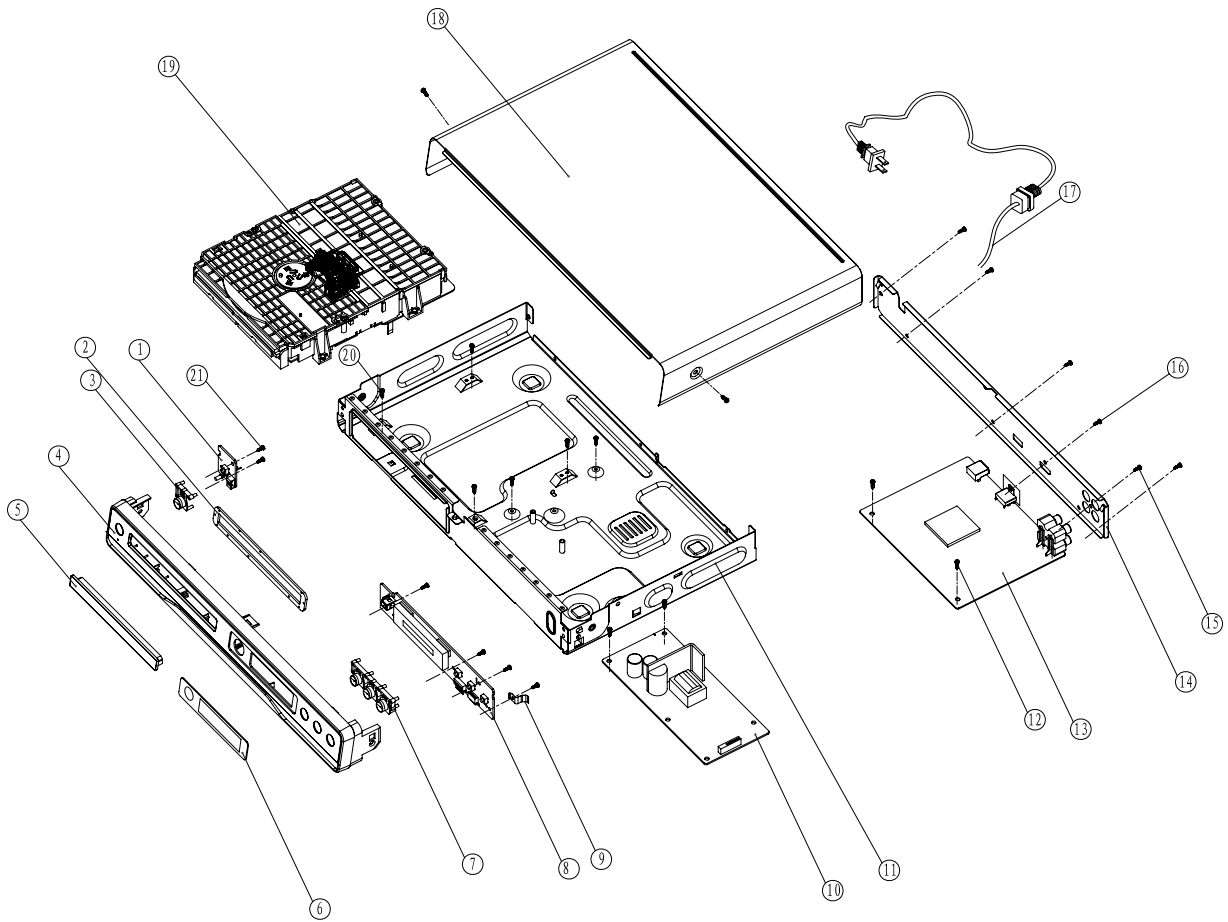
Main Board Print-layout (Top side):



Main Board Print-layout (Bottom side):

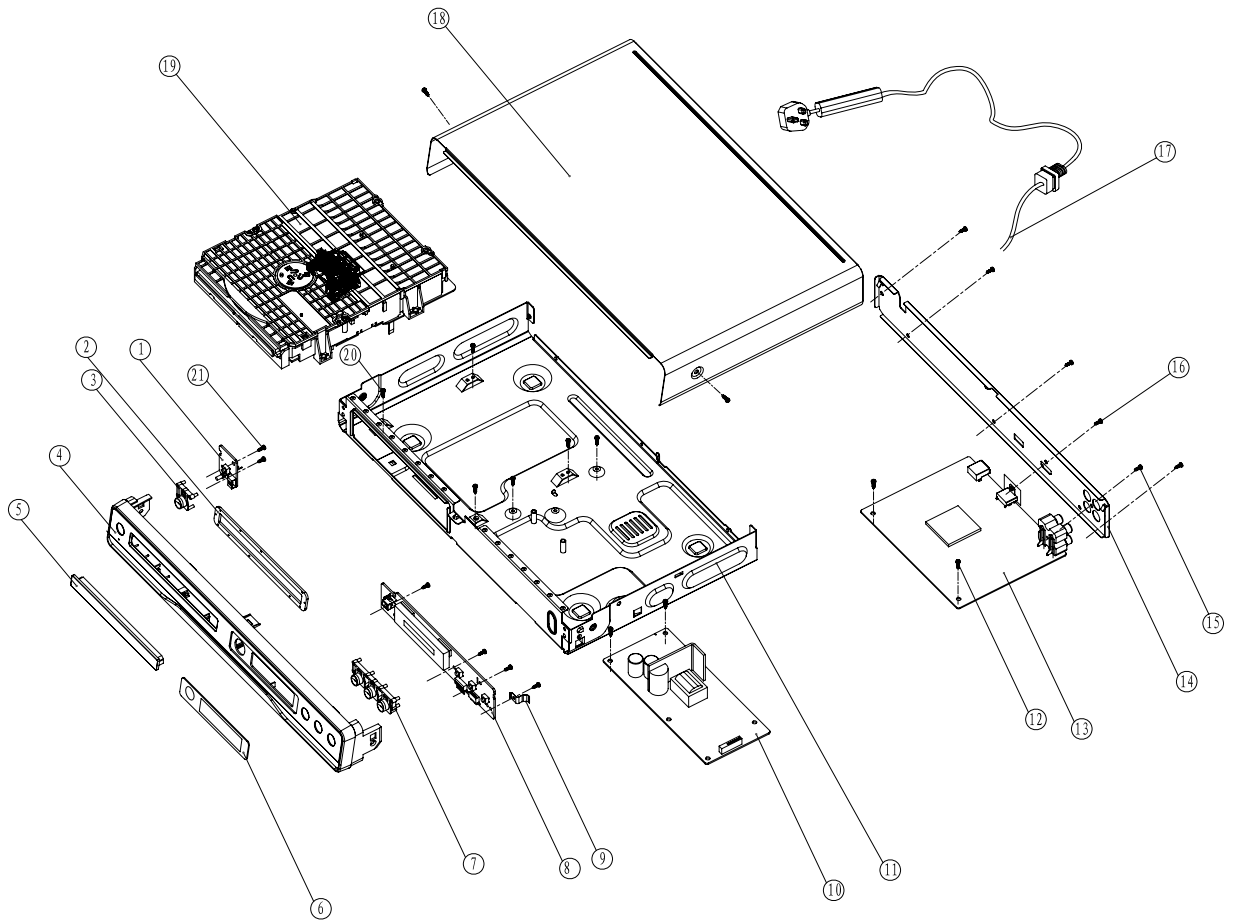


Exploded view for BDP2500/12/51:



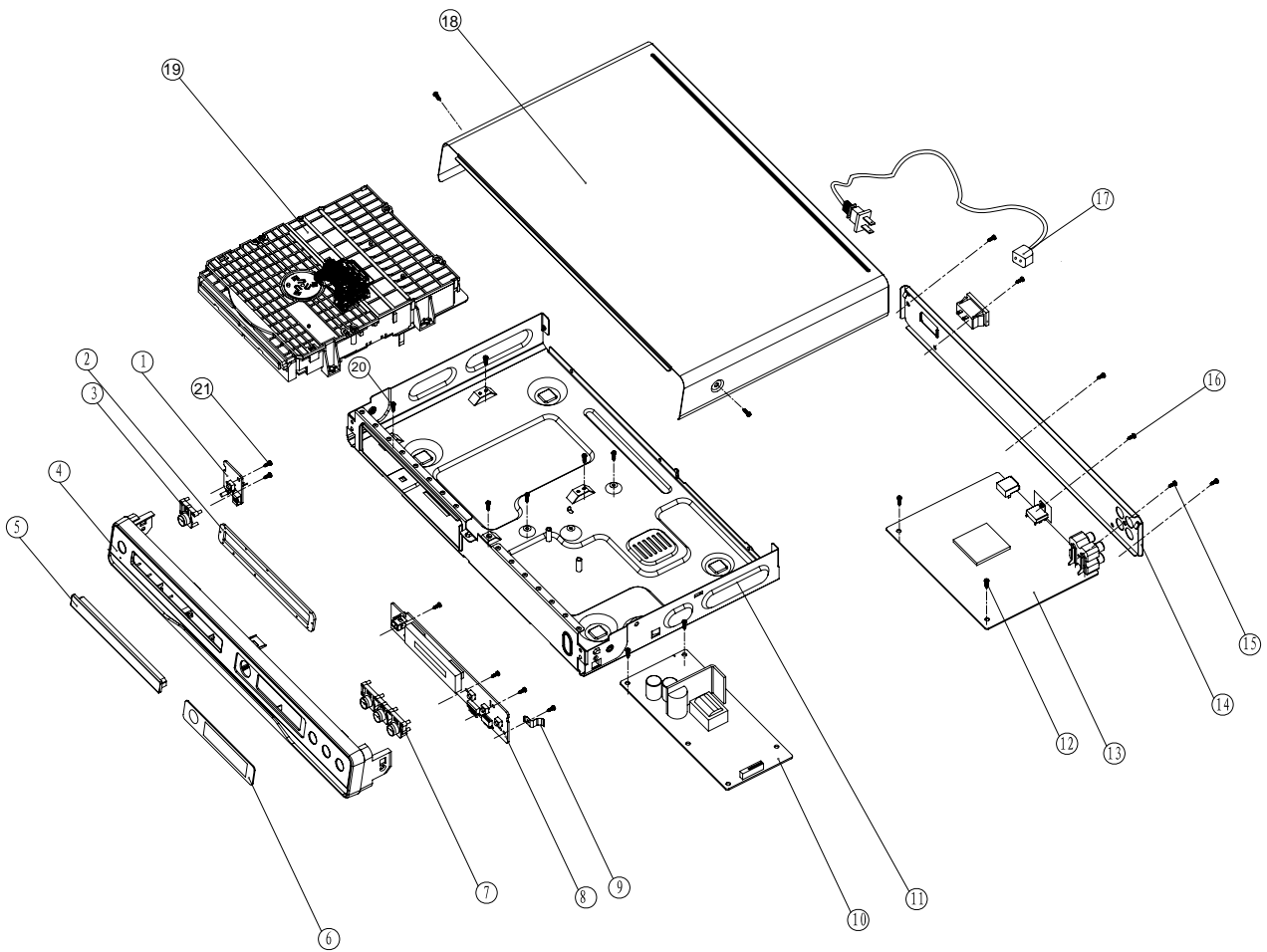
It's a general mechanical exploded view for BDP2500/12/51, and pls refer to the model set for detailed information.
Assy1 includes components: 2.3.4.6.7

Exploded view for BDP2500/05:







It's a general mechanical exploded view for BDP2500/05, and pls refer to the model set for detailed information. Assy1 includes components: 2.3.4.6.7

Exploded view for BDP2500/98:



It's a general mechanical exploded view for BDP2500/98, pls refer to the model set for detailed information.
Assy1 includes components:2.3.4.6.7

BDP2500/12/05/51 SERVICE PARTS

No.	12NC No.	Description	Q'ty
1	996510029506	ASSY-SW BD	1
 10	996510029504	ASSY-PW BD	1
 11	996510029508	BOTTOM CABINET	1
13	996510029502	ASSY-MAIN BD	1
14	996510029515	BACK PANEL	1
 17	996510029501	POWER CORD (For /12/51)	1
 17	996510029559	POWER CORD (For /05)	1
18	996510029503	TOP COVER	1
19	996510025832	ASA BOARD P021-C	1
5	996510029507	FRONT DOOR	1
8	996510029505	ASSY-FE BD	1
AVCABLE	996500020384	AUDIO/VIDEO CABLE 1	1
Assy1	996510029514	FRONT PANEL ASSY	1
CN504	996510025841	8P CABLE SAN-8P P2.0 L130	1
J303	996510025836	HD TRANSMISSION LINE	1
J320	996510025852	4PIN CABLE TJC3-4Y*2	1
JP1	996510025834	CABLE 5P 130MM FH-JC20	1
JP3	996510027138	4P cbl	1
JP2	996510030213	6PIN 2.0MM 280MM PH-JC20	1
RC	996510025848	REMOTE CONTROL	1
SATALINE	996510029499	SATA CABLE	1

Screws List

No	12NC No.	Description	Q'ty
12	—	ST SCREW B 3.0 X 6 BLACK	11
15	—	S/T SCREW B 3 X 8 BF	1
16	—	M/C SCREW 3 X 6 B	1
20	—	ST SCREW B 3.0 X 7 SILVER	4
21	—	S/T SCREW B 2.6 X 6 BF	6

SAFETY PRECAUTION

The parts identified by  mark are critical for safety. Replace only with part number specified.

The mounting position of replacement is to be identical with originals. The substitute replacement parts which do not have the same safety characteristics as specified in the parts list may create shock, fire or other hazards.

BDP2500/98 SERVICE PARTLIST

ELECTRICAL PARTLIST

No	12NC No.	Description	Q'ty
13	996510029502	ASSY-MAIN BD	1
1	996510029506	ASSY-SW BD	1
△ 10	996510029504	ASSY-PW BD	1
8	996510029505	ASSY-FE BD	1
19	996510025832	BLU-RAY DISC MODULE	1

ASSY-MAIN BD COMPONENT PARTLIST

NO	12NC NO.	Description	Q'ty
D201	996510026638	4-CHANNEL ESD SOLUTION	1
D206	996510026638	4-CHANNEL ESD SOLUTION	1
D208	996510014439	SMD. SWITCHING DIODE LL4148	1
D512	996510026617	IC PGB1010603	1
D513	996510026617	IC PGB1010603	1
D514	319801010620	DIO SIG SM BAV99 (COL) R	1
D515	319801010850	DIO REC SS34 COL R	1
D519	319801010850	DIO REC SS34 COL R	1
D523	996510014439	SMD. SWITCHING DIODE LL4148	1
D524	996510014439	SMD. SWITCHING DIODE LL4148	1
Q200	996510026641	N-channel MOSFET AO3414	1
Q206	996510009669	SMD.TRANSISTOR MMBT3904LT1 NPN	1
Q207	996510026641	N-channel MOSFET AO3414	1
Q208	996510026631	MOSFET AO3401	1
Q209	996510009769	N Channel MOSFET 2SK3108	1
Q210	996510009769	N Channel MOSFET 2SK3108	1
Q211	996510010949	MOSFET AO3402	1
Q212	996510009669	SMD.TRANSISTOR MMBT3904LT1 NPN	1
Q213	996510009670	TRANSISTOR SMT 3CG9012M	1
Q214	996510009670	TRANSISTOR SMT 3CG9012M	1
Q215	996510009669	SMD.TRANSISTOR MMBT3904LT1 NPN	1
Q216	996510009669	SMD.TRANSISTOR MMBT3904LT1 NPN	1
Q217	996510009669	SMD.TRANSISTOR MMBT3904LT1 NPN	1
Q218	996510009670	TRANSISTOR SMT 3CG9012M	1
Q219	996510009670	TRANSISTOR SMT 3CG9012M	1
Q220	996510009669	SMD.TRANSISTOR MMBT3904LT1 NPN	1
Q221	996510009669	SMD.TRANSISTOR MMBT3904LT1 NPN	1
U1	996510026642	IC G691L2	1
U101	996510026646	1Gb DDR2 SDRAM	1
U102	996510026646	1Gb DDR2 SDRAM	1
U103	996510026623	512Mb DDR2 SDRAM	1
U104	996510026623	512Mb DDR2 SDRAM	1
U106	996510026643	IC G2996	1
U107	996510030212	BD MAIN IC MT8520FXG	1
U3	996510026622	5A REGULATOR	1
U301	996510026615	1Gbit NAND FLASH	1
U4	996510026645	1A POSITIVE REGULATOR	1
U907	996510026619	IC EN25F8-01B FALSH	1
U908	996510026616	DC-DC 3A TPS54331	1
U909	996510026616	DC-DC 3A TPS54331	1
U914	996510026625	IC 78L050	1
U915	996510026652	IC 4385DA DAC	1
U916	996510010924	Dual operational amplifier	1
Y200	996510026628	CRYSTAL 27MHz	1
Y300	996510026621	CRYSTAL 25MHZ	1

ASSY-FE BD COMPONENT PARTLIST

NO	12NC NO.	Description	Q'ty
IR1	996510026624	IR RECEIVER MODULE2.7-5.5V12mm	1
U2	996510026644	HT48R06A-1 OPT MCU	1
U4	996500026619	VFD DRIVER IC CS16312EN	1
VFD1	996510009816	VFD VFD20-0707FN	1

ASSY-PW BD COMPONENT PARTLIST

NO	12NC NO.	Description	Q'ty
D501	996510013568	DIODE FR107	1
D502	996510013568	DIODE FR107	1
D503	996500025702	DIODE SR3100	1
D504	996510013568	DIODE FR107	1
D505	996510009725	DIODE 2A1000V	1
D506	996510009725	DIODE 2A1000V	1
D507	996510009725	DIODE 2A1000V	1
D508	996510009725	DIODE 2A1000V	1
D509	996500027866	DIODE SR360 3A/60V	1
D510	996500027866	DIODE SR360 3A/60V	1
L3	996500032509	COIL SL0811-6R8K2R4	1
L6	996500032509	COIL SL0811-6R8K2R4	1
LF501	996510026639	COMMON INDUCTANCE	1
△ T501	996510030215	TRANSFORMER (BCK-03EF25)	1
U501	996510030211	PWM IC NCP1271B	1
U502	996500024838	PC123X9YFZ	1
U503	996500014609	IC AM431LP	1
U504	996500032514	IC KA278R12	1
U505	996510026629	IC L79L12ACZ	1
ZD501	996510007898	DIODE ZENER 24V 1/2W 5%	1
ZD502	996500015716	DIODE ZENER 33V 1/2W 5%	1
ZD503	996510007898	DIODE ZENER 24V 1/2W 5%	1
ZD506	996510006106	DIODE ZENER 5V6 1/2W 5%	1

MECHANICAL PARTLIST

No	12NC No.	Description	Q'ty
△ 11	996510029508	BOTTOM CABINET	1
14	996510030372	BACK PANEL	1
18	996510029503	TOP COVER	1
AVCABL	996500020384	AUDIO/VIDEO CABLE 1	1
Assy1	996510029514	FRONT PANEL ASSY	1
CN504	996510025841	8P CABLE SAN-8P P2.0 L130	1
DBOX	996510030214	DISPLAY BOX	1
J320	996510025852	4PIN CABLE TJC3-4Y*2	1
JP1	996510025834	CABLE 5P 130MM FH-JC20	1
JP2	996510030213	6PIN 2.0MM 280MM PH-JC20	1
JP3	996510027138	4P cbl	1
PAD	996510025837	SPONGE PAD	4
△ PCORD	996510001537	POWER CORD	1
RC	996510025848	REMOTE CONTROL	1
SATALIN	996510029499	SATA CABLE	1

Screws List

No	12NC No.	Description	Q'ty
12	—	ST SCREW B 3.0 X 6 BLACK	11
15	—	S/T SCREW B 3 X 8 BF	1
16	—	M/C SCREW 3 X 6 B	1
20	—	ST SCREW B 3.0 X 7 SILVER	4
21	—	S/T SCREW B 2.6 X 6 BF	6

REVISION LIST

Version 1.0

* Initial release for BDP2500/12/05

Version 1.1

* Correction:

19 996510025832 BLU-RAY DISC MODULE (was ASA BOARD P021-C)

Version 1.2

* Adding BDP2500/98

Version 1.3

* Adding BDP2500/51